



ANDREW M. CUOMO
Governor

JOANNE M. MAHONEY
Chair

MATTHEW J. DRISCOLL
Executive Director

January 11, 2021

Mayor Thomas A. Murphy
Village of Mamaroneck
123 Mamaroneck Avenue
Mamaroneck, NY 10543

**Re: TANE 21-9, NYSTA PIN N72657
Resurfacing of New England Thruway (I-95)
MP NE 8.8-10.8 NB, MP NE 13.0-14.1 NB & SB**

Dear Mayor Murphy:

The Thruway Authority is preparing final design documents for a project on I-95 (New England Thruway). The project will include resurfacing deteriorated concrete pavement with an asphalt overlay, minor drainage work, and safety upgrades. In addition, the following bridges over I-95 will be raised to increase vertical clearance:

- Old White Plains Road (MP NE 9.55)
- West Street (MP NE 610.52)
- Boston Post Road (MP NE 613.71)

The Old White Plains Road bridge over I-95 is located within the Village of Mamaroneck. It will be necessary to close the bridge during construction. The expected duration of bridge closure is four weeks. Enclosed for your reference are the following items:

- General Plan (GNP-201) and Profile (PRO-201)
- Detour Plans (MPD-004)

Please review the enclosed information. If you have any questions, please contact the Project Manager, Christina Kaneg, at (518) 436-3145 or Christina.Kaneg@thruway.ny.gov.

Sincerely,

A handwritten signature in blue ink, appearing to read "Robert Cournoyer".

Robert Cournoyer, P.E.
Director, Highway Design Bureau

RC:CK

Enclosure

Cc: Jerry Barberio
Village Manager, Village of Mamaroneck
123 Mamaroneck Avenue
Mamaroneck, NY 10543

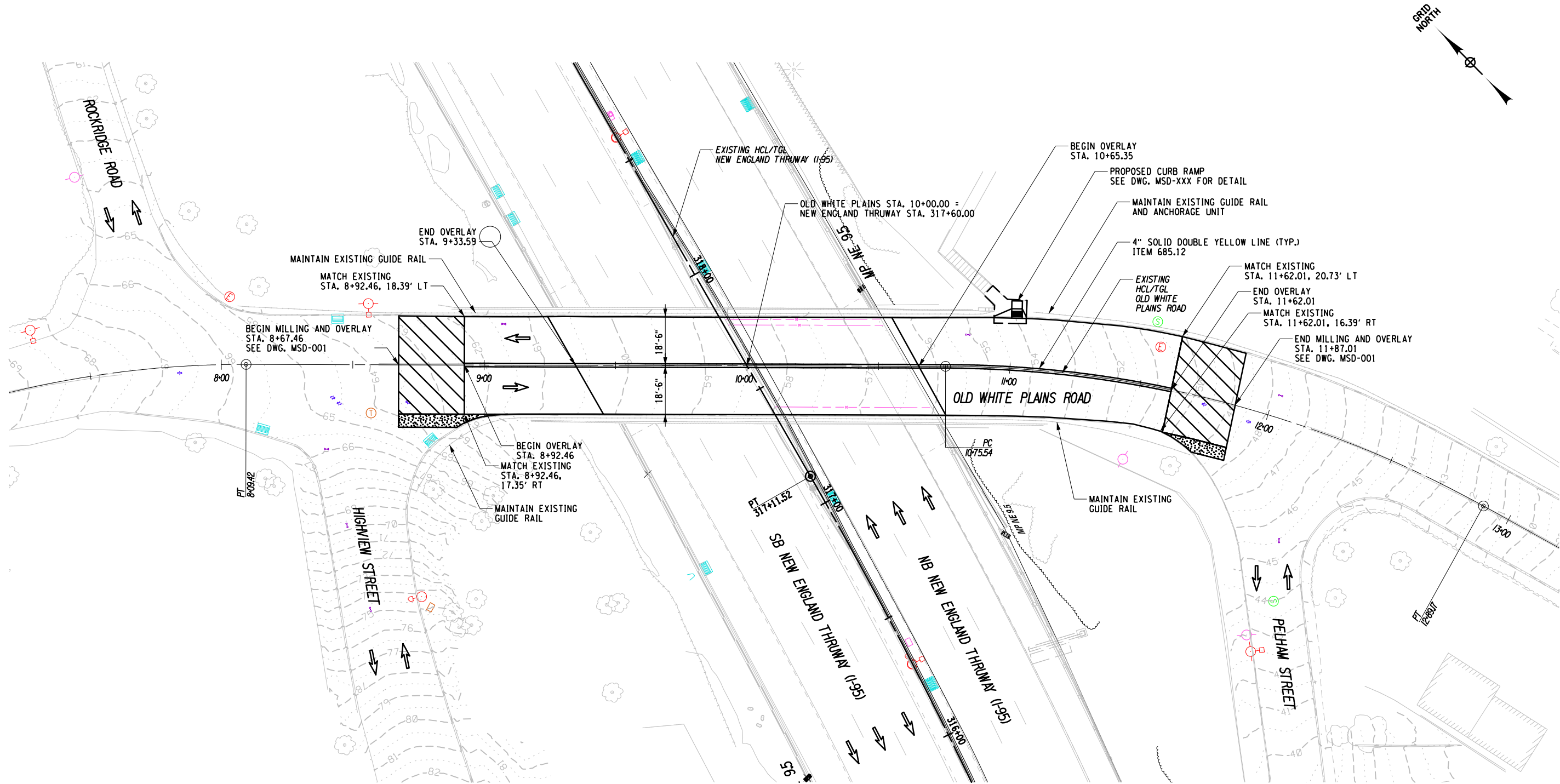
CHECKED BY: M. ADELOTTE

DRAFTED BY: J. HASSAN

CHECKED BY: M. SCOTT

DESIGNED BY: J. HASSAN

DESIGN SUPERVISOR: M. MACNEIL



ALTERED ON:	AFFIXED ON:
SIGNATURE: STAMP:	SIGNATURE: STAMP:

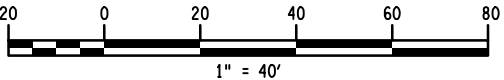
IT IS A VIOLATION OF LAW FOR ANY PERSON, UNLESS THEY ARE ACTING UNDER THE DIRECTION OF A LICENSED PROFESSIONAL ENGINEER, ARCHITECT, LANDSCAPE ARCHITECT, OR LAND SURVEYOR, TO ALTER AN ITEM IN ANY WAY. IF AN ITEM BEARING THE STAMP OF A LICENSED PROFESSIONAL IS ALTERED, THE ALTERING ENGINEER, ARCHITECT, LANDSCAPE ARCHITECT, OR LAND SURVEYOR SHALL STAMP THE DOCUMENT AND INCLUDE THE NOTATION "ALTERED BY" FOLLOWED BY THEIR SIGNATURE, THE DATE OF SUCH ALTERATION, AND A SPECIFIC DESCRIPTION OF THE ALTERATION.

REVISIONS			
DATE	DESCRIPTION	BY	SYM.

LEGEND:
MILL AND OVERLAY
INTERSECTION ADJUSTMENT

Thruway Authority

HENNINGSON DURHAM & RICHARDSON
ARCHITECTURE AND
ENGINEERING PC



TITLE OF PROJECT RESURFACING OF NEW ENGLAND THRUWAY	CONTRACT NUMBER: TANE 21-XX
LOCATION OF PROJECT M.P. NE 8.8 TO M.P. NE 10.8 M.P. NE 13.0 TO M.P. NE 14.1	DATE: XX/XX/XX
TITLE OF DRAWING GENERAL PLAN OLD WHITE PLAINS ROAD	DRAWING NUMBER: GNP-201

CHECKED BY: M. ADELOTTE

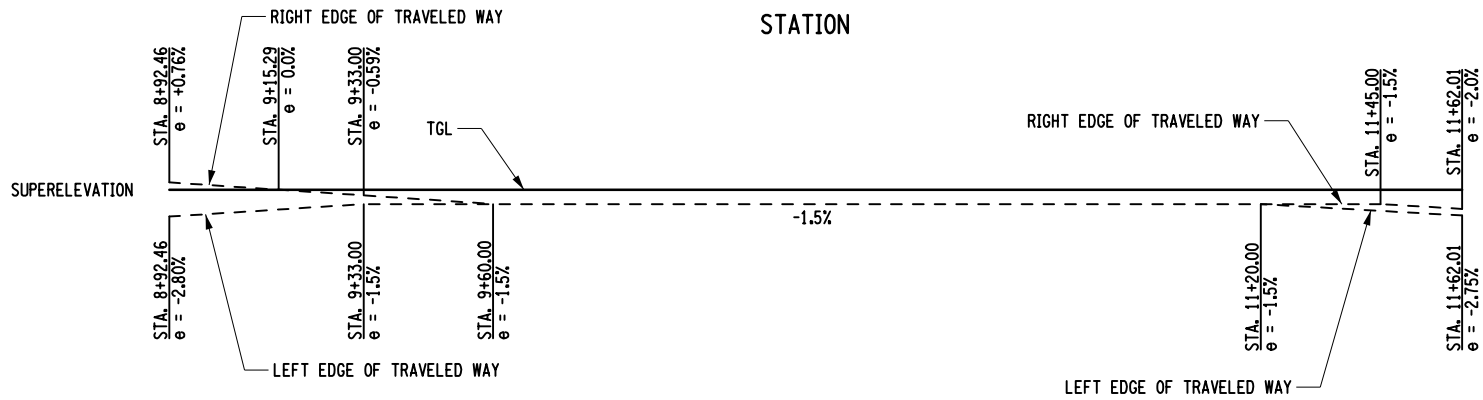
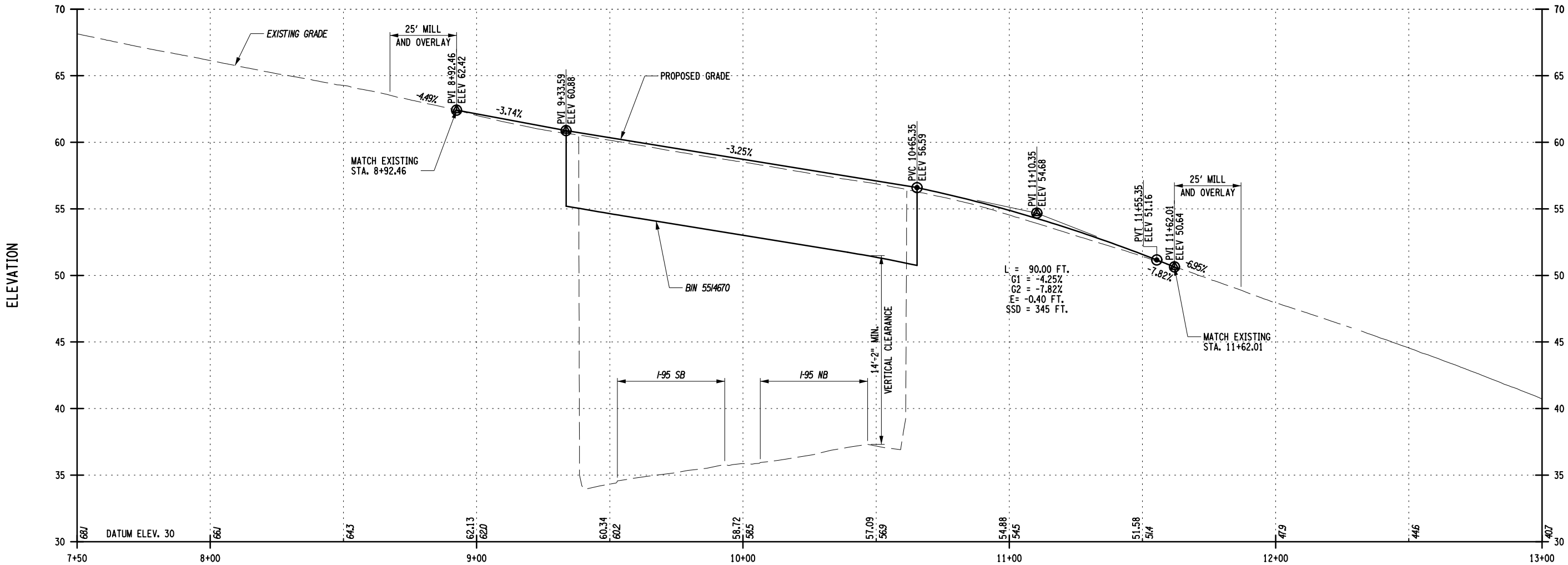
DRAFTED BY: J. HASSAN

CHECKED BY: M. SCOTT

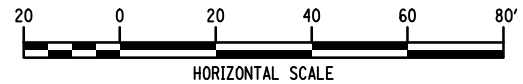
DESIGNED BY: E. PIERSON

DESIGN SUPERVISOR: M. MACNEIL

OLD WHITE PLAINS ROAD



BANKING DIAGRAM



ALTERED ON:	AFFIXED ON:
SIGNATURE: STAMP:	SIGNATURE: STAMP:

IT IS A VIOLATION OF LAW FOR ANY PERSON, UNLESS THEY ARE ACTING UNDER THE DIRECTION OF A LICENSED PROFESSIONAL ENGINEER, ARCHITECT, LANDSCAPE ARCHITECT, OR LAND SURVEYOR, TO ALTER AN ITEM IN ANY WAY. IF AN ITEM BEARING THE STAMP OF A LICENSED PROFESSIONAL IS ALTERED, THE ALTERING ENGINEER, ARCHITECT, LANDSCAPE ARCHITECT, OR LAND SURVEYOR SHALL STAMP THE DOCUMENT AND INCLUDE THE NOTATION "ALTERED BY" FOLLOWED BY THEIR SIGNATURE, THE DATE OF SUCH ALTERATION, AND A SPECIFIC DESCRIPTION OF THE ALTERATION.

REVISIONS			
DATE	DESCRIPTION	BY	SYM.



Thruway
Authority



HENNINGSON DURHAM
& RICHARDSON
ARCHITECTURE AND
ENGINEERING PC

TITLE OF PROJECT
RESURFACING OF
NEW ENGLAND THRUWAY
LOCATION OF PROJECT
M.P. NE 8.8 TO M.P. NE 10.8
M.P. NE 13.0 TO M.P. NE 14.1
TITLE OF DRAWING
PROFILE
OLD WHITE PLAINS ROAD

CONTRACT NUMBER:
TANE 21-XX
DATE:
XX/XX/XX
DRAWING NUMBER:
PRO-201

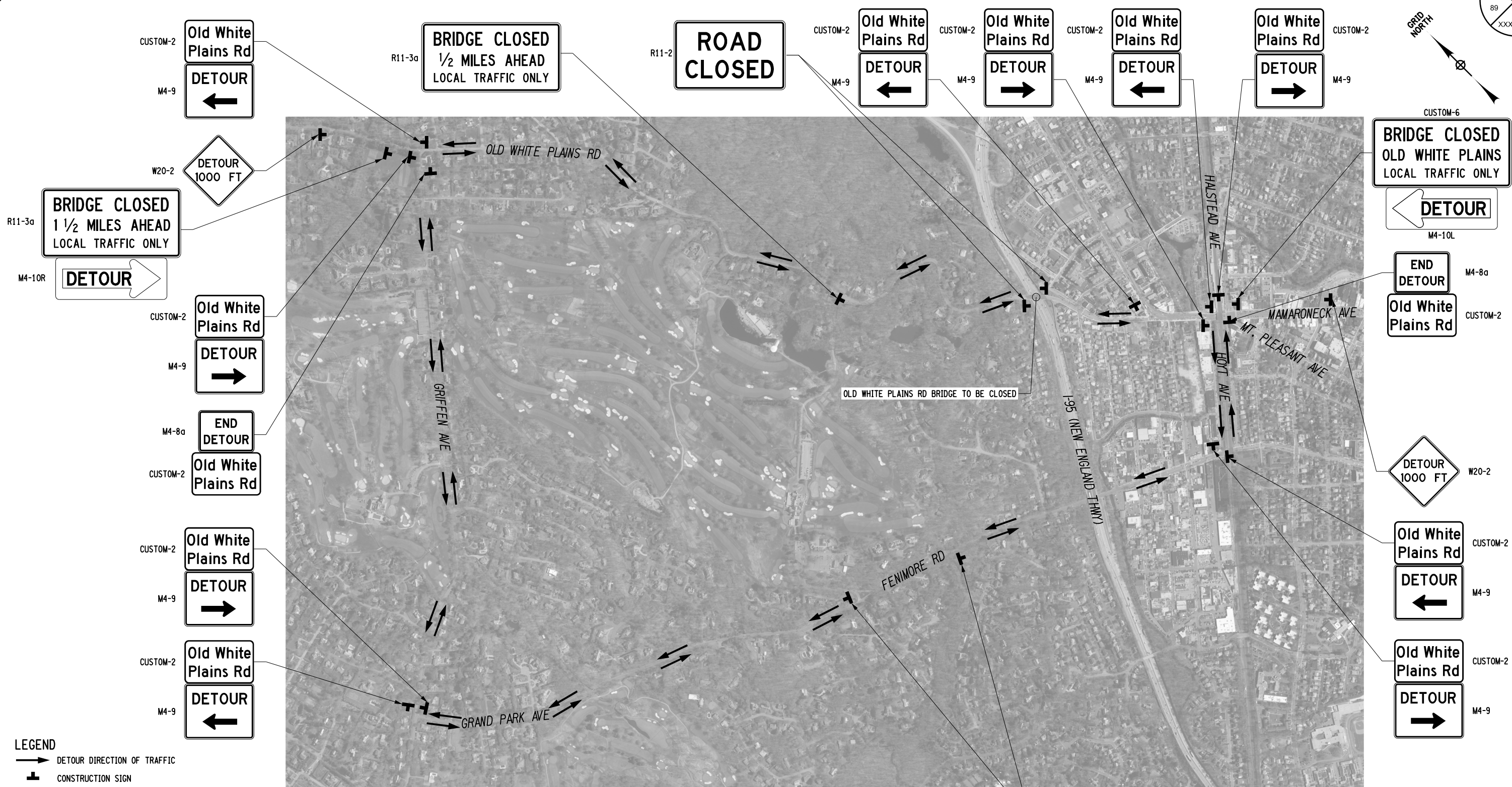
CHECKED BY: B. DIETER

DRAFTED BY: E. PIERSON

CHECKED BY: B. DIETER

DESIGNED BY: E. PIERSON

DESIGN SUPERVISOR: M. MACNEIL






ALTERED ON:	AFFIXED ON:
SIGNATURE: STAMP:	SIGNATURE: STAMP:

NOTES:
1. COORDINATE WITH BEELINE BUS ROUTE TO DURING
DETOUR OF OLD WHITE PLAINS ROAD BRIDGE.

IT IS A VIOLATION OF LAW FOR ANY PERSON, UNLESS THEY ARE ACTING UNDER THE DIRECTION OF A LICENSED PROFESSIONAL ENGINEER, ARCHITECT, LANDSCAPE ARCHITECT, OR LAND SURVEYOR, TO ALTER AN ITEM IN ANY WAY. IF AN ITEM BEARING THE STAMP OF A LICENSED PROFESSIONAL IS ALTERED, THE ALTERING ENGINEER, ARCHITECT, LANDSCAPE ARCHITECT, OR LAND SURVEYOR SHALL STAMP THE DOCUMENT AND INCLUDE THE NOTATION "ALTERED BY" FOLLOWED BY THEIR SIGNATURE, THE DATE OF SUCH ALTERATION, AND A SPECIFIC DESCRIPTION OF THE ALTERATION.

REVISIONS			
DATE	DESCRIPTION	BY	SYM.



HENNINGSON DURHAM & RICHARDSON
ARCHITECTURE AND
ENGINEERING PC

TITLE OF PROJECT RESURFACING OF NEW ENGLAND THRUWAY	CONTRACT NUMBER: TANE 21-XX
LOCATION OF PROJECT M.P. NE 8.8 TO M.P. NE 10.8 M.P. NE 13.0 TO M.P. NE 14.1	DATE: XX/XX/XX
TITLE OF DRAWING MAINTENANCE AND PROTECTION OF TRAFFIC DETAILS DETOUR SHEET 2	DRAWING NUMBER: MPD-004

OLD WHITE PLAINS ROAD BRIDGE
LOCAL TRAFFIC DETOUR

Old White
Plains Rd
DETOUR
↑

