



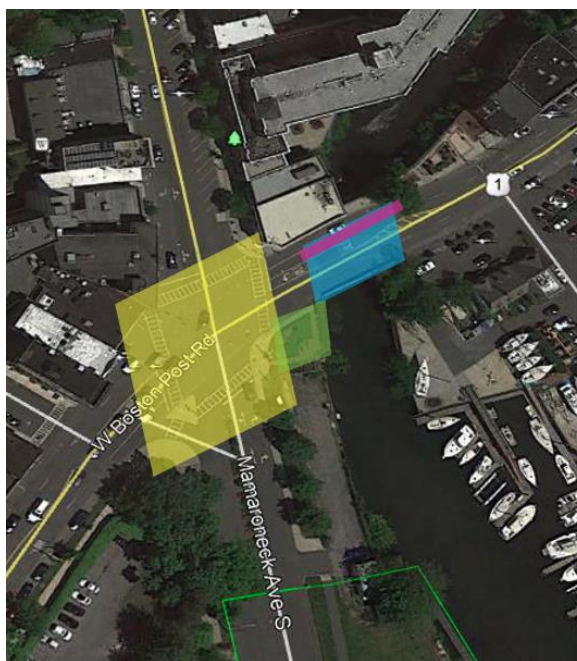
Route 1 Bridge over the Mamaroneck River in Mamaroneck

About the Project

- Removal/Replacement of existing arch bridge, which carries Route 1 over Mamaroneck River
- Provide replacement of 66" Westchester County Sewer trunk line that runs across the bridge
- Coordination with and modifications to third-party utility facilities
- Removal of the existing structure supporting Meighan Park (Harbor Island Pocket Park), and installation of retaining walls and embankment upon which to reconstruct the park
- Traffic signal and pedestrian safety improvements at the intersection of Route 1 and Mamaroneck Avenue
- The existing historic marker will be removed, stored, and reused on the new bridge
- Stone will be placed in a manner that conceals the tunnel liner
- Meighan Park and landscaping to be restored upon completion of construction
- Traffic in each direction will be maintained at all times
- Off-peak lane closures to complete roadway reconstruction, final utility installation and complete pavement through intersection

Why is this project needed?

- The existing natural stone arch structure is over 100 years old, needs repairs and is missing mortar between the stones
- Full replacement is needed because of hydraulic vulnerability and potential scour, which could undermine the bridge
- Bridge will be widened and pedestrian walkway will be installed



- Replacement of Existing Stone Arch Bridge over Mamaroneck River (BIN 1000040)
- Intersection Improvements Route 1 & Mamaroneck Ave
- Harbor Island "Pocket" Park Reconstruction
- 66" Sewer Line Replacement

