

Saved Thursday, June 25, 2015 5:17:19 PM \\CHEONG Plotted Thursday, June 25, 2015 5:16:00 PM Cheong, Jason

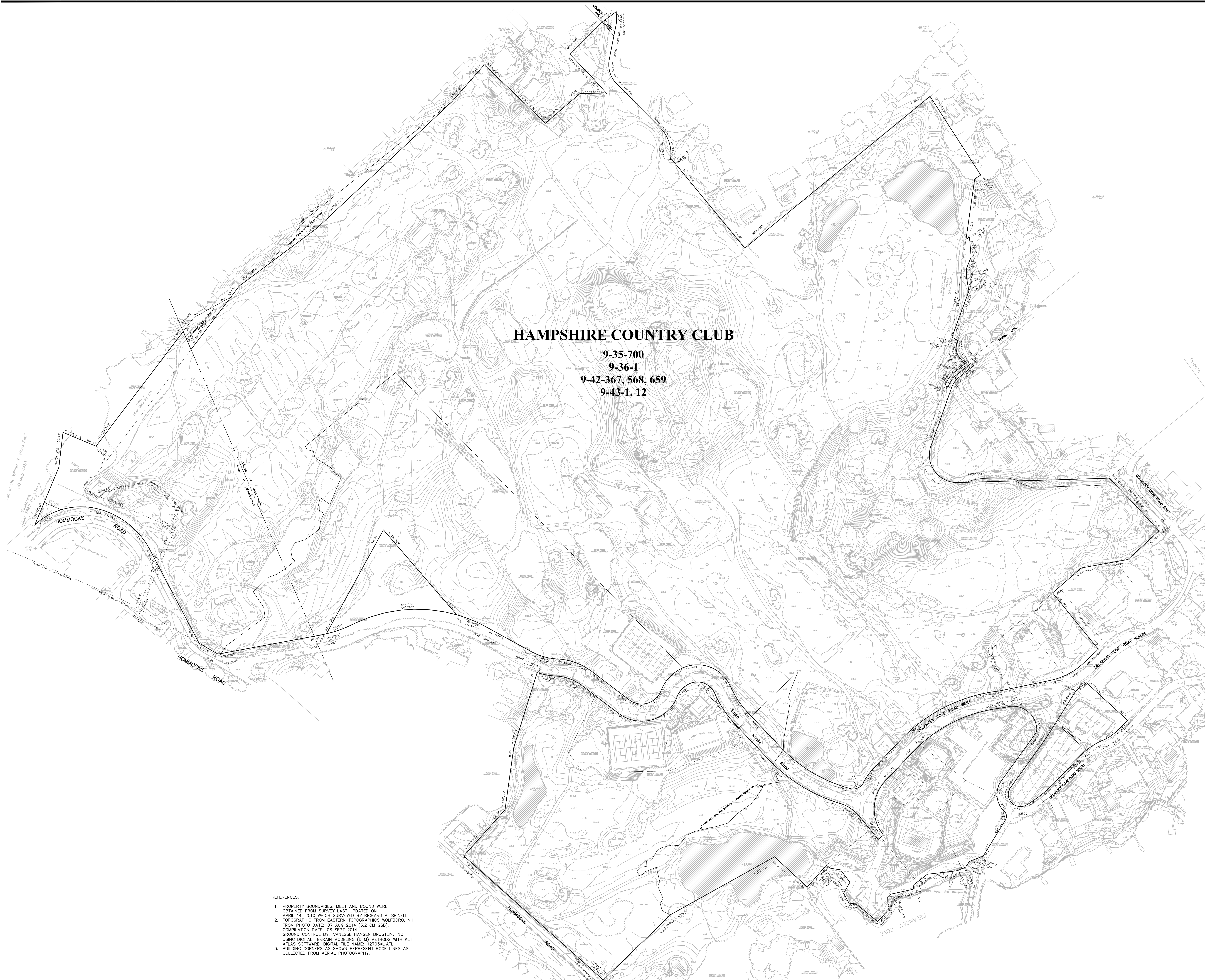
\\VHB\PRO\WHITEPLAINS\28677.02 HAMPSHIRE SUBDIVISION\CAD\LD\PLANSET\28677.02\_EXISTING CONDITIONS



Vanasse Hangen Brustlin, Inc.

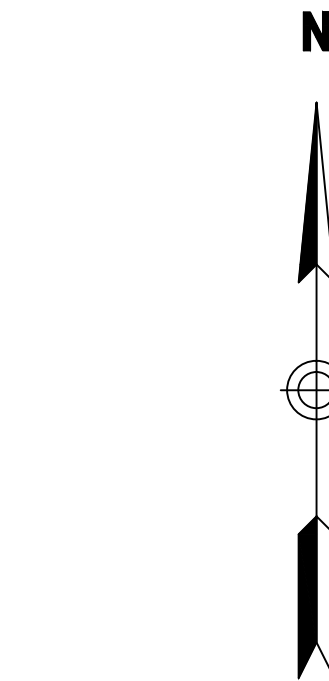
Transportation  
Land Development  
Environmental Services

50 Main Street - Suite 360  
White Plains, NY 10606  
914.467.6600 • FAX 914.761.3759



REFERENCES:

1. PROPERTY BOUNDARIES, MEET AND BOUND WERE OBTAINED FROM SURVEY LAST UPDATED ON APRIL 14, 2010 WHICH SURVEYED BY RICHARD A. SPINELLI
2. TOPOGRAPHIC FROM EASTERN TOPOGRAPHICS WOLFBOURNE, NH FROM PHOTO DATE: 07 AUG 2014 (4.2 CM GSD). COMPILED DATE: 08 SEPT 2014 GROUND CONTROL BY: VANASSE HANGEN BRUSTLIN, INC USING DIGITAL TERRAIN MODELING (DTM) METHODS WITH KLT ATLAS SOFTWARE. DIGITAL FILE NAME: 12703XLATL
3. BUILDING CORNERS AS SHOWN REPRESENT ROOF LINES AS COLLECTED FROM AERIAL PHOTOGRAPHY.



100 0 100 200  
SCALE IN FEET


No.	Revision	Date	Appr.
Designed by	JC	Drawn by	JC
CAD checked by	MWJ	Approved by	MWJ
Scale	1"=100'	Date	September 8, 2014
Project Title			

Hampshire Country Club  
Planned Residential  
Development (P.R.D.)

Village of Mamaroneck, NY

Issued for  
VILLAGE REVIEW

NOT FOR CONSTRUCTION

Drawing Title

Existing Conditions Plan



Michael W. Junghans  
N.Y. Professional Engineer  
NY Lic. No. 072072

Drawing Number

EX-1

Sheet of

Project Number

28677.02

28677.02\_EXISTING CONDITIONS.DWG