



Vanasse Hangen Brustlin, Inc.

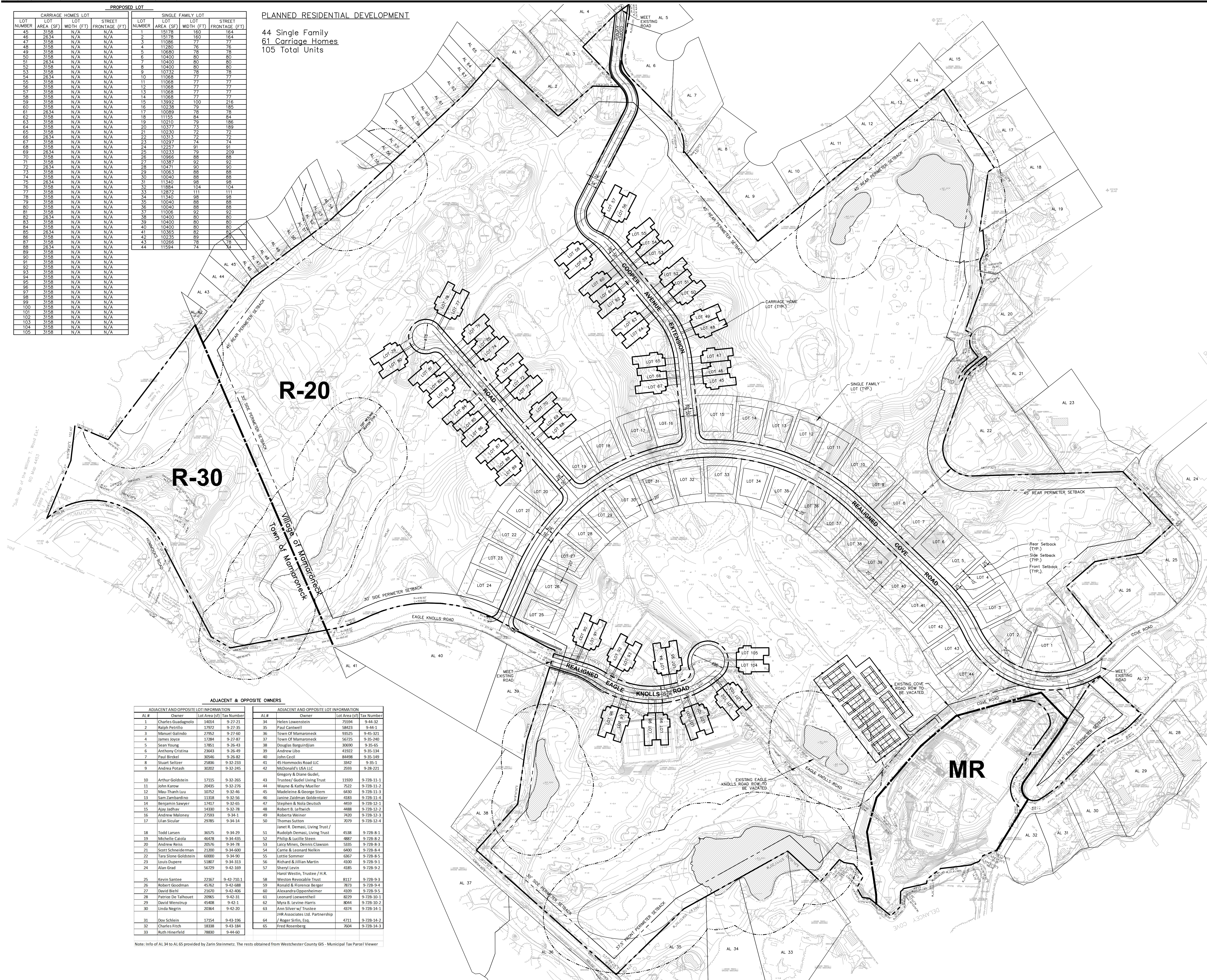
Transportation
Land Development
Environmental Services

50 Main Street - Suite 360
White Plains, NY 10606
914.467.6600 • FAX 914.761.3759

PROPOSED LOT					SINGLE FAMILY LOT				
LOT NUMBER	CARRIAGE AREA (SF)	HOMES LOT WIDTH (FT)	LOT FRONTAGE (FT)	STREET FRONTAGE (FT)	LOT NUMBER	LOT AREA (SF)	LOT WIDTH (FT)	LOT FRONTAGE (FT)	STREET FRONTAGE (FT)
45	3158	N/A	N/A	N/A	1	15178	160	164	164
46	2634	N/A	N/A	N/A	2	15178	160	164	164
47	3158	N/A	N/A	N/A	3	11086	77	77	77
48	3158	N/A	N/A	N/A	4	11280	76	76	76
49	3158	N/A	N/A	N/A	5	10580	78	78	78
50	3158	N/A	N/A	N/A	6	10400	80	80	80
51	2634	N/A	N/A	N/A	7	10400	80	80	80
52	3158	N/A	N/A	N/A	8	10400	80	80	80
53	3158	N/A	N/A	N/A	9	10732	78	78	78
54	2634	N/A	N/A	N/A	10	11068	77	77	77
55	3158	N/A	N/A	N/A	11	11068	77	77	77
56	3158	N/A	N/A	N/A	12	11068	77	77	77
57	3158	N/A	N/A	N/A	13	11068	77	77	77
58	3158	N/A	N/A	N/A	14	11068	77	77	77
59	3158	N/A	N/A	N/A	15	13992	100	216	216
60	3158	N/A	N/A	N/A	16	10238	79	185	185
61	2634	N/A	N/A	N/A	17	10098	78	78	78
62	3158	N/A	N/A	N/A	18	11155	84	84	84
63	3158	N/A	N/A	N/A	19	10210	73	188	188
64	3158	N/A	N/A	N/A	20	10377	73	188	188
65	3158	N/A	N/A	N/A	21	10230	72	72	72
66	2634	N/A	N/A	N/A	22	10213	72	72	72
67	3158	N/A	N/A	N/A	23	10297	74	74	74
68	3158	N/A	N/A	N/A	24	12257	91	91	91
69	2634	N/A	N/A	N/A	25	10233	79	79	79
70	3158	N/A	N/A	N/A	26	10965	88	88	88
71	3158	N/A	N/A	N/A	27	10387	90	90	90
72	2634	N/A	N/A	N/A	28	10471	90	90	90
73	3158	N/A	N/A	N/A	29	10063	88	88	88
74	3158	N/A	N/A	N/A	30	10040	88	88	88
75	2634	N/A	N/A	N/A	31	11340	98	98	98
76	3158	N/A	N/A	N/A	32	11884	104	104	104
77	3158	N/A	N/A	N/A	33	12972	111	111	111
78	3158	N/A	N/A	N/A	34	11340	98	98	98
79	3158	N/A	N/A	N/A	35	10040	88	88	88
80	3158	N/A	N/A	N/A	36	10040	88	88	88
81	3158	N/A	N/A	N/A	37	11006	92	92	92
82	2634	N/A	N/A	N/A	38	10000	80	80	80
83	3158	N/A	N/A	N/A	39	10400	80	80	80
84	3158	N/A	N/A	N/A	40	10400	80	80	80
85	2634	N/A	N/A	N/A	41	10363	89	89	89
86	3158	N/A	N/A	N/A	42	10235	89	89	89
87	3158	N/A	N/A	N/A	43	10266	78	78	78
88	2634	N/A	N/A	N/A	44	11594	74	74	74
89	3158	N/A	N/A	N/A					
90	3158	N/A	N/A	N/A					AL 45
91	3158	N/A	N/A	N/A					
92	3158	N/A	N/A	N/A					
93	3158	N/A	N/A	N/A					
94	3158	N/A	N/A	N/A					AL 44
95	3158	N/A	N/A	N/A					
96	3158	N/A	N/A	N/A					
97	3158	N/A	N/A	N/A					
98	3158	N/A	N/A	N/A					
99	3158	N/A	N/A	N/A					
100	3158	N/A	N/A	N/A					
101	3158	N/A	N/A	N/A					
102	3158	N/A	N/A	N/A					
103	3158	N/A	N/A	N/A					
104	3158	N/A	N/A	N/A					
105	3158	N/A	N/A	N/A					

PLANNED RESIDENTIAL DEVELOPMENT

44 Single Family
61 Carriage Homes
105 Total Units



ADJACENT & OPPOSITE OWNERS					
ADJACENT AND OPPOSITE LOT INFORMATION			ADJACENT AND OPPOSITE LOT INFORMATION		
AL #	Owner	Lot Area (sq ft)	AL #	Owner	Lot Area (sq ft)
1	Charles Guedagnolo	1404 9-22-21	34	Helen Lowenstein	75594 9-44-32
2	Paula Perillo	1297 9-22-25	35	Paul Constant	88623 9-44-31
3	Manuel Gallindo	27952 9-27-60	36	Town Of Manamonte	93525 9-43-321
4	James Joyce	17884 9-27-87	37	Town Of Manamonte	96725 9-35-35
5	Sean Young	17851 9-26-43	38	Donalds Burgardjian	30690 9-35-65
6	Anthony Cristina	3238 9-26-49	39	Andrew Lino	9235 9-35-34
7	Patti Birckel	35046 9-26-83	40	John Cecil	84498 9-34-65
8	Stuart Seltzer	25836 9-32-23	41	45 Hommocks Road LLC	3342 9-35-21
9	Andrea Potash	30082 9-32-23	42	McDonalds USA LLC	2993 9-38-31
10	Arthur Goldstein	17115 9-32-26	43	Gregory & Diane Gold	
11	John Karow	20435 9-32-75	44	Wayne & Kathy Mulling	11920 9-72B-11
12	Theresa Luk	10752 9-32-46	45	Madelene & George Stern	7522 9-72B-13
13	Sam Zambardino	11318 9-33-55	46	Janine Zaidman Goldenthal	4183 9-72B-13
14	Benjamin Sawyer	14713 9-33-56	47	Stephen & Nola Anderson	4559 9-72B-13
15	Ajay Iyathur	4330 9-32-78	48	Robert B. Leifweh	4828 9-72B-12
16	Gregory Meloney	2259 9-32-89	49	Robert Weinert	7450 9-72B-91
17	Lilian Sicular	29785 9-34-14	50	Thomas Sutton	7079 9-72B-12
18	Michelle Carls	36628 9-34-29	51	Ruth B. Demasi, Living Trust /	
19	Thomas L. Demasi	36475 9-34-35	52	Janelle Daniels, Living Trust	458 9-72B-81
20	Andrew Reiss	20576 9-34-78	53	Julius & Lucille Stern	487 9-72B-92
21	Scott Schneiderman	21200 9-34-60	54	Lacey Mills, Dennis Clawson	5335 9-72B-83
22	Tara Stone Goldsheim	6000 9-34-50	55	Carrie & Leonard Nellik	6400 9-72B-84
23	James Dwyere	5388 9-34-13	56	Lottie Sommer	6867 9-72B-85
24	Alan Gray	56729 9-34-69	57	Michael & Jillian Martin	4100 9-72B-91
25			58	Sheryl Lynn	4185 9-72B-92
26	Kevin Santee	22167 9-42-70	59	Harold Wesiner, Trustee / H.R.	
27	Robert Goodman	45762 9-42-88	60	Weston Receivable	8112 9-72B-93
28	David Biehl	21620 9-42-31	61	Ronald & Frances Burger	7875 9-72B-94
29	Patrice De Talhout	20965 9-42-60	62	Alexandra Oppenheimer	4109 9-72B-95
30	James Westrop	4584 9-42-62	63	Leonard Lowenwehelt	8029 9-72B-95
31	Linda McGrath	25424 9-42-62	64	David L. Levine Haring LLC	8044 9-72B-12
32	Linda McGrath	25424 9-42-20	65	Ann Silver W/ Trustee	4374 9-72B-141
33	Boj Schein	17154 9-43-196		JHR Associates Ltd. Partnership	
34	Charles Fitch	18343 9-43-184		/ Roger Siroten	471 9-72B-142
35	Ruth Hefner	78830 9-44-60		Robert Rosenfeld	7604 9-72B-143

Note: Info of AL 34 to AL 65 provided by Zarin Steinmetz. The rests obtained from Westchester County GIS - Municipal Tax Parcel Viewer

No.	Revision	Date	Apprnt
Designed by <i>JC</i>	Drawn by <i>JC</i>	Checked by <i>MWJ</i>	
CAD checked by <i>MWJ</i>	Approved by <i>MWJ</i>		
Scale 1"=100'	Date June 25, 2015		

Hampshire Country Club
Planned Residential
Development (P.R.D.)

Village of Mamaroneck, NY

VILLAGE REVIEW

NOT FOR CONSTRUCTION

Preliminary Plat



Michael W. Junghans
N.Y. Professional Engineer
NY Lic. No. 072072

Drawing Number

Plat-1

Sheet of

Project Number
28677.02

28677.02 PLOT.DWG