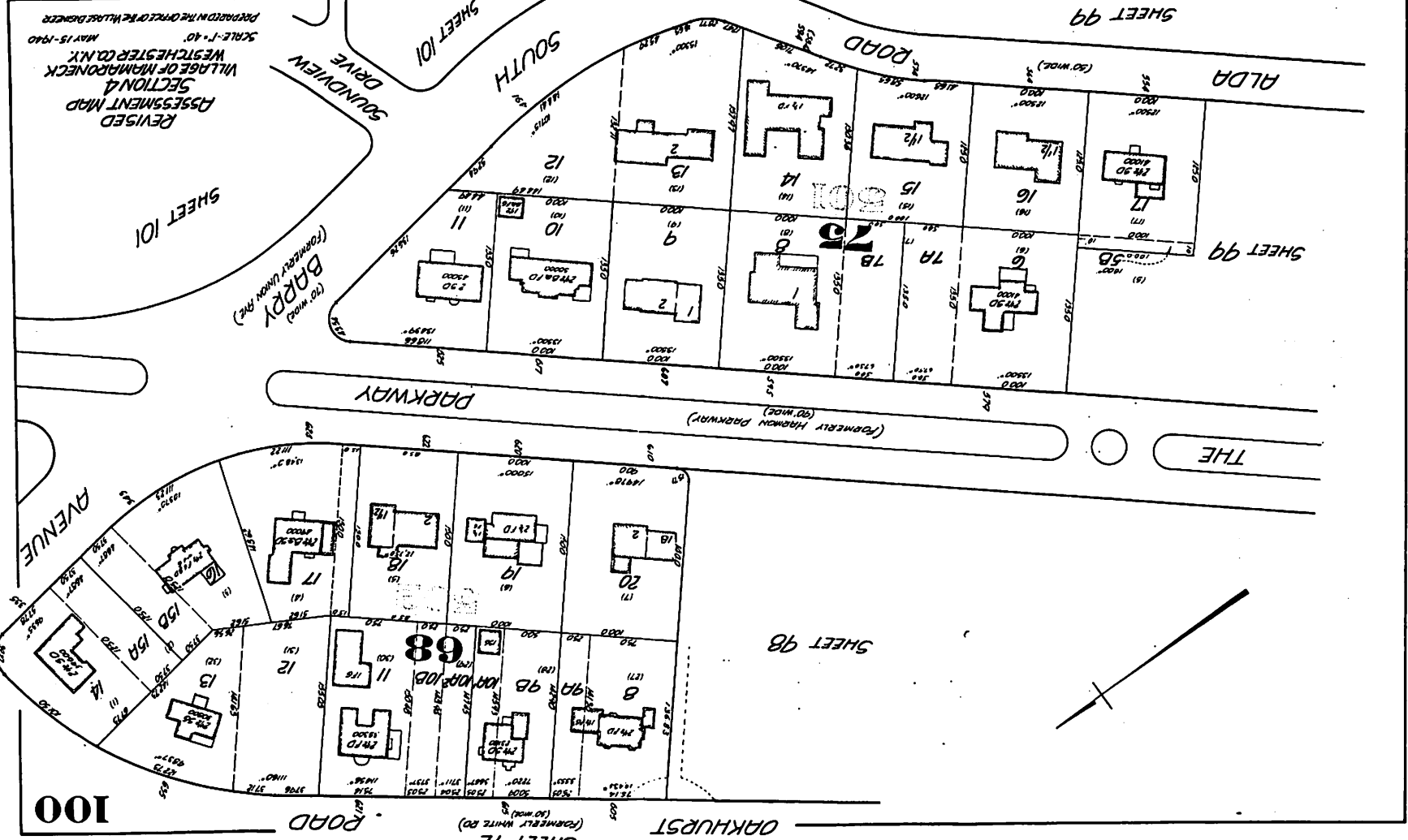


TAX MAP COUNTY OF WESTCHESTER TOWN OF RYE SECTION 4. BLOCK NO. 68-75. CASE NO. 49. VILLAGE OF MAMARONECK. APPROVED STATE TAX COMMISSION SECRETARY.



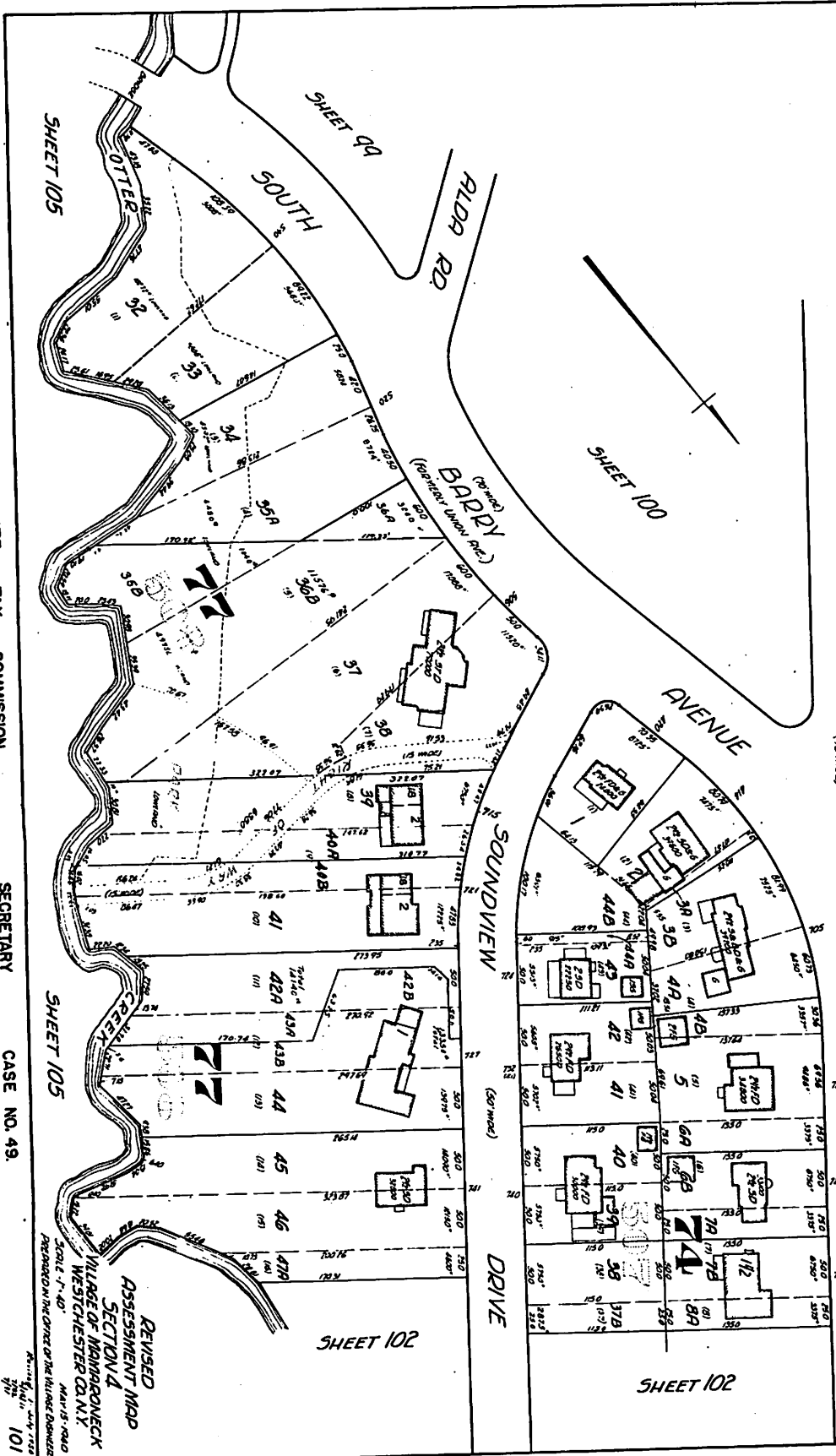
REVISSED
ASSESSMENT MAP
SECTION 4
VILLAGE OF MAMARONECK
WESTCHESTER CO. N.Y.
SCALE - 1" = 40'
MAY 15 - 1940
PREPARED IN THE OFFICE OF THE TOWN ENGINEER

100

THE PARKWAY (BENTLEY HANCOCK DRIVE)

SHEET 93

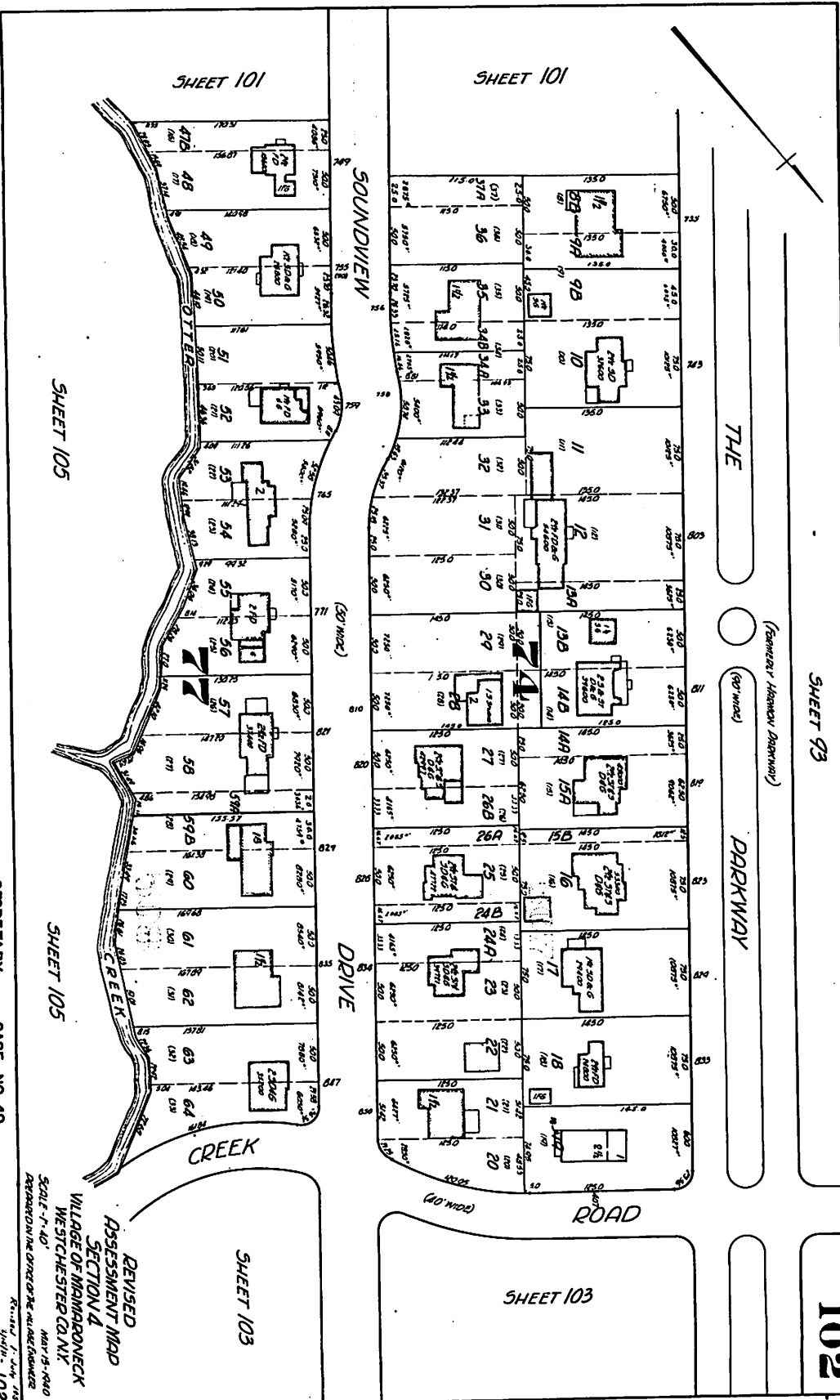
101



REVISED MAP
ASSESSMENT MAP
SECTION 4
VILLAGE OF MAMARONECK
WESTCHESTER CO. N.Y.
SCALE 1" = 40'
PREPARED IN THE OFFICE OF THE TOWN ENGINEER
MAMARONECK, N.Y.
JANUARY 1919

SHEET 93

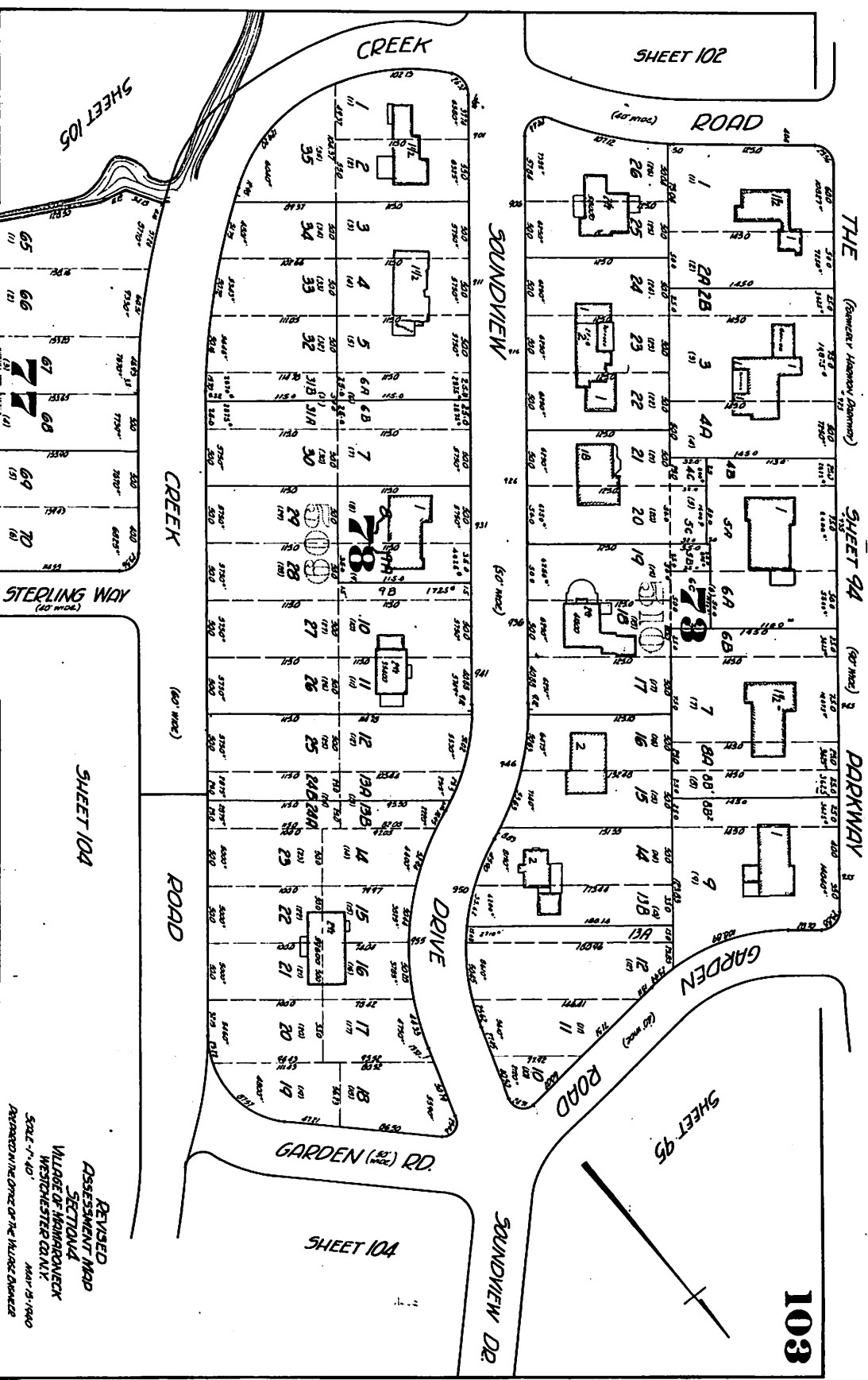
102



APPROVED 19 STATE TAX COMMISSION SECRETARY CASE NO. 49.

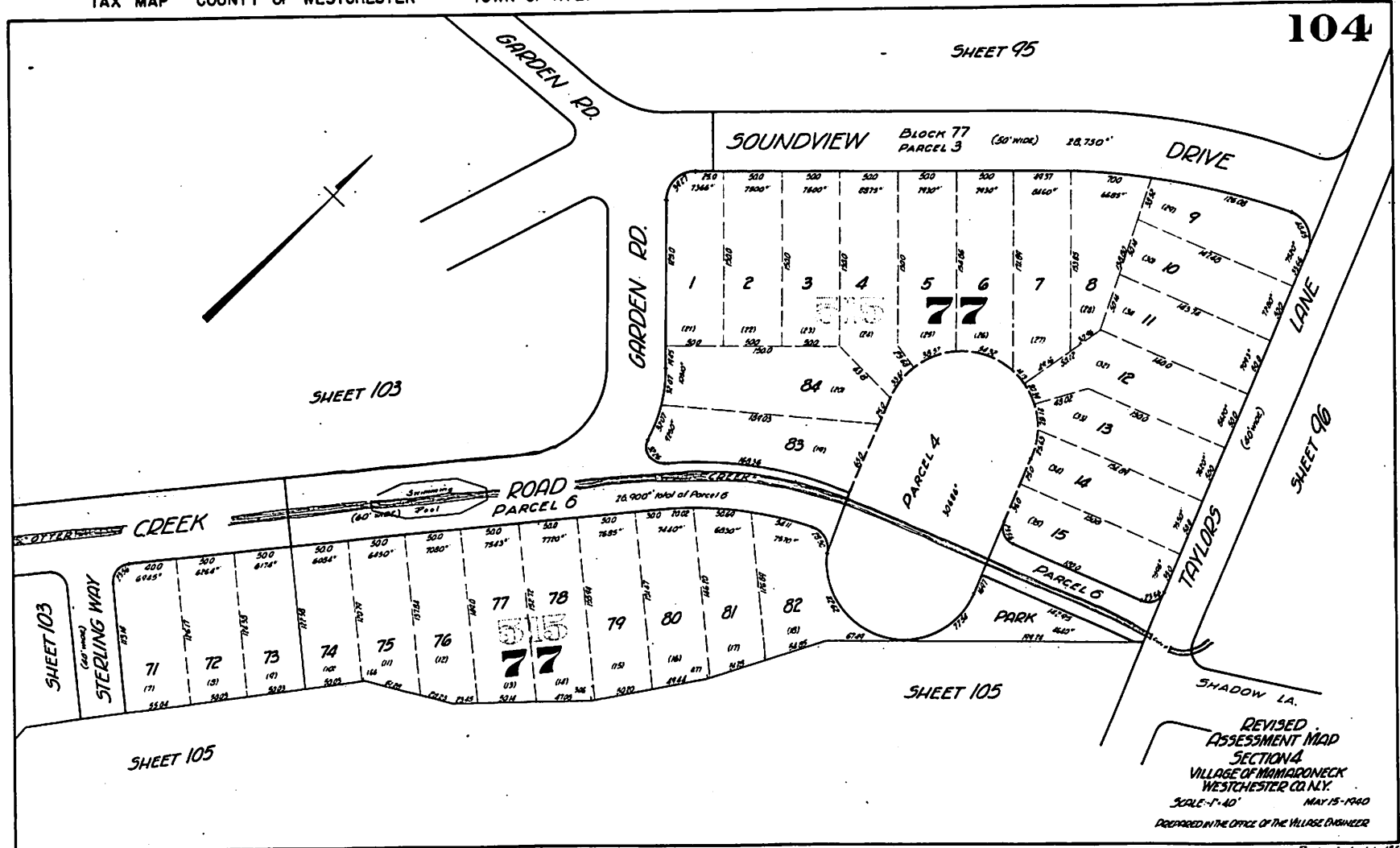
REVISED ASSESSMENT MAP SECTION 4 VILLAGE OF MAMARONECK WESTCHESTER CO. N.Y. MAY 15, 1940 REPRODUCED BY ORDER OF THE ALBANY ENGINEER

TAX MAP COUNTY OF WESTCHESTER STATE TAX COMMISSION TOWN OF RYE SECTION 4, BLOCK NO. 73-77-78, VILLAGE OF MAMARONECK, SECRETARY CASE NO. 49.



REVISED
ASSESSMENT MAP
SECTION 4
VILLAGE OF MAMARONECK
WESTCHESTER COUNTY
MAY 15 1940
Prepared in the Office of the Village Engineer
Date: 7-1-40

103



104

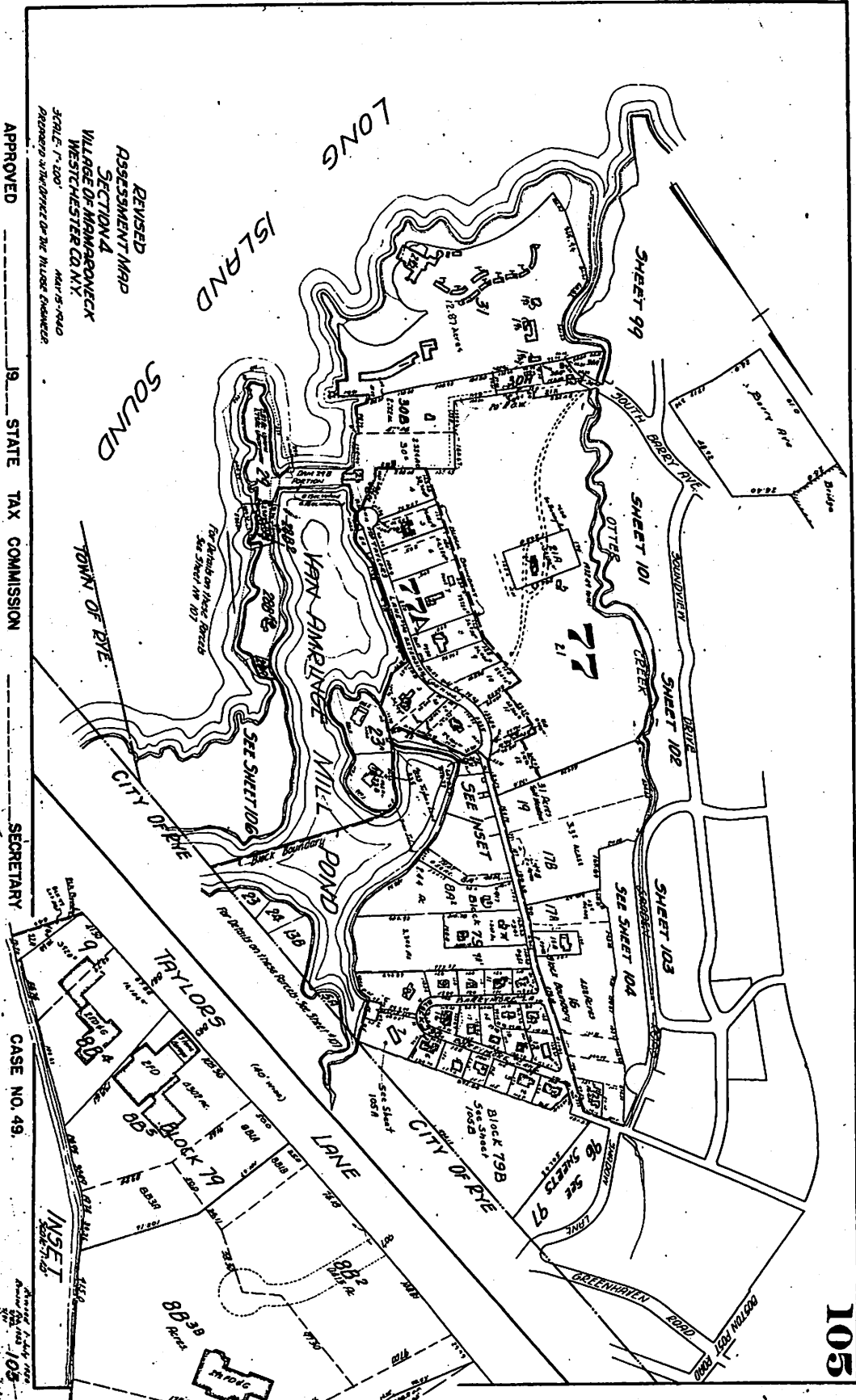
SHEET 95

SHEET 103

SHEET 96

SHEET 105

REVISED
ASSESSMENT MAP
SECTION 4
VILLAGE OF MAMARONECK
WESTCHESTER CO. N.Y.
SCALE - 1" = 40' MAY 15, 1940
PREPARED IN THE OFFICE OF THE VILLAGE ENGINEER

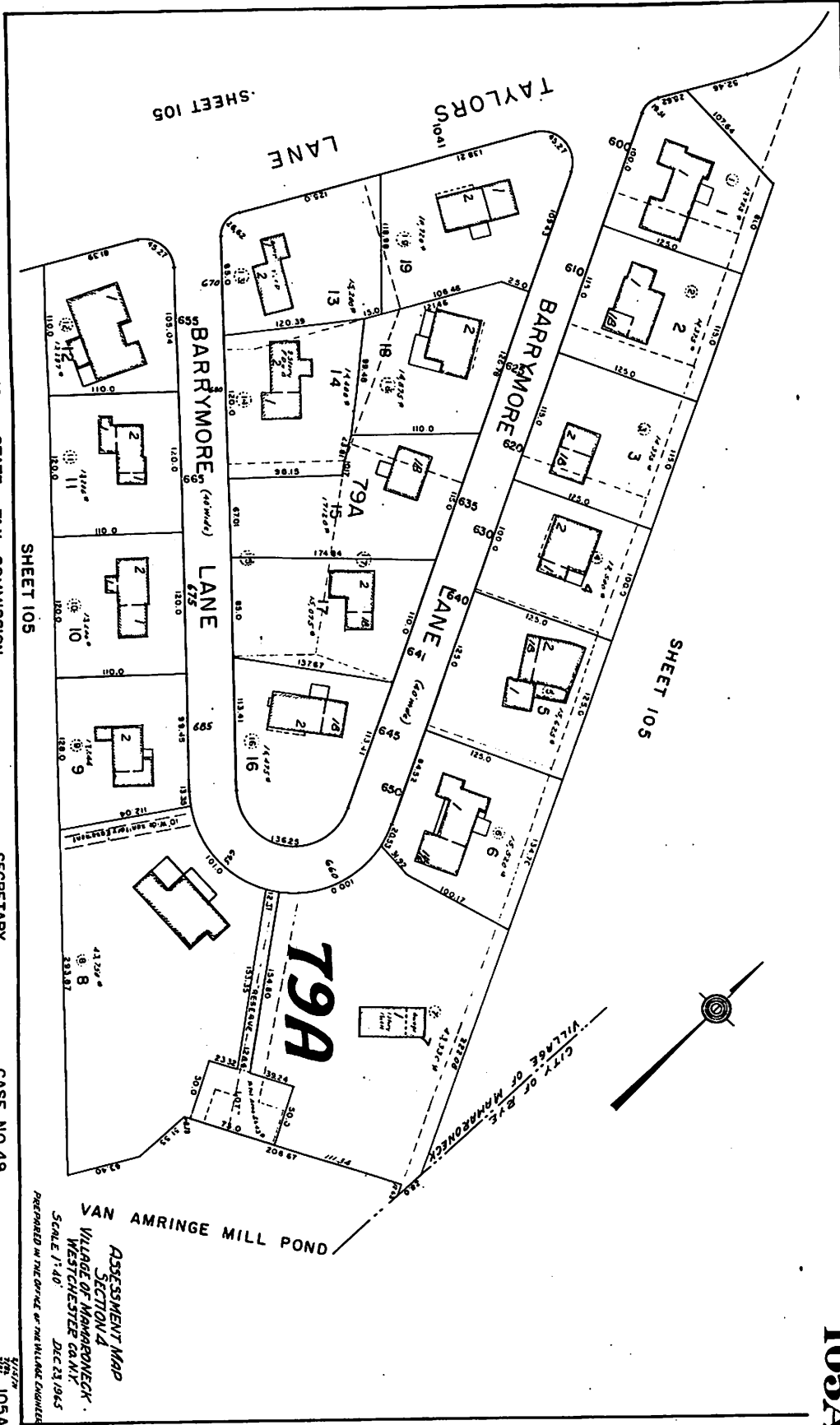


REVISED
ASSESSMENT MAP
SECTION 4
VILLAGE OF MAMARONECK
WESTCHESTER COUNTY
SCALE 1"=100'
APPROVED BY THE BOARD OF SUPERVISORS

APPROVED _____ 19__ STATE TAX COMMISSION

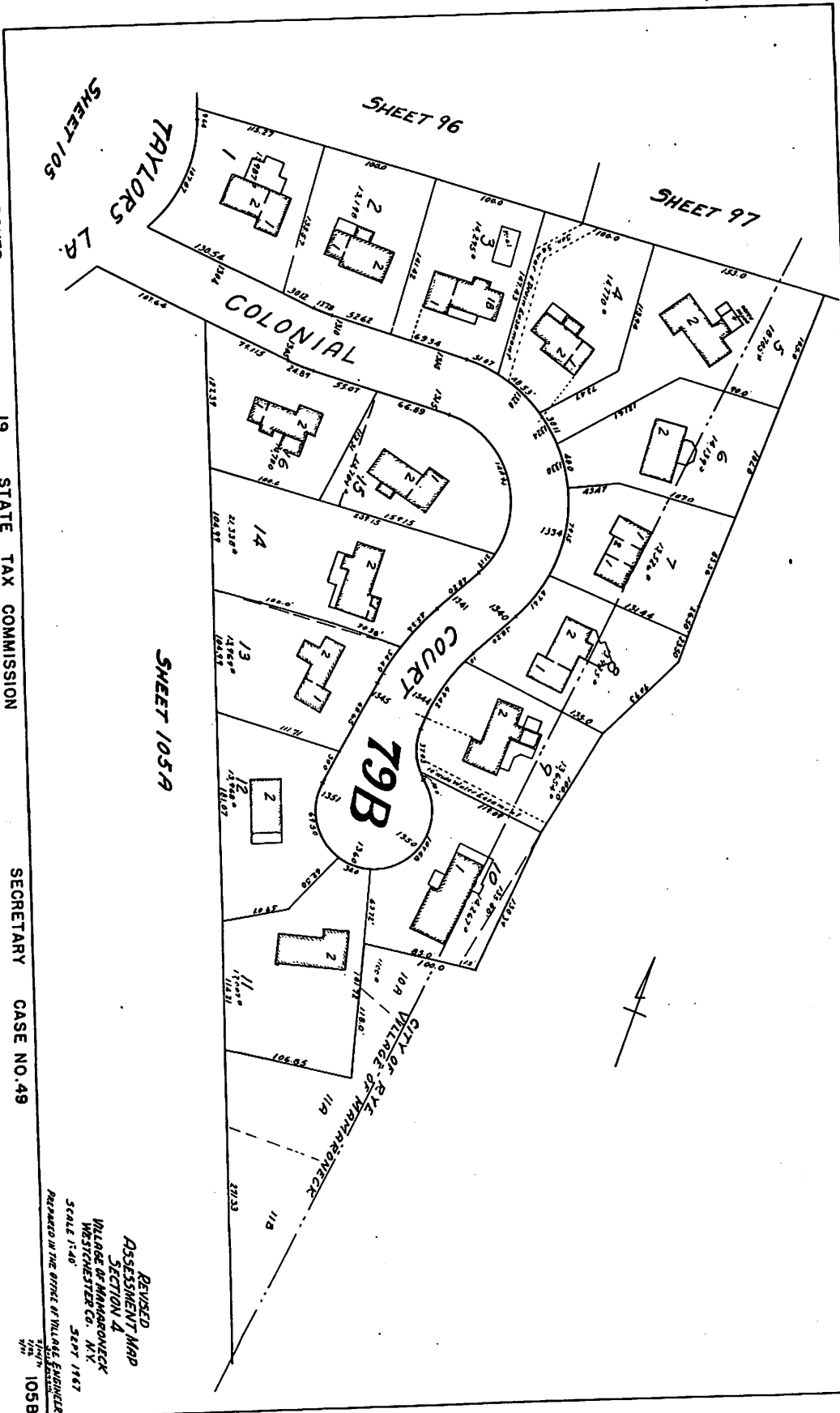
SECRETARY

CASE NO. 49.



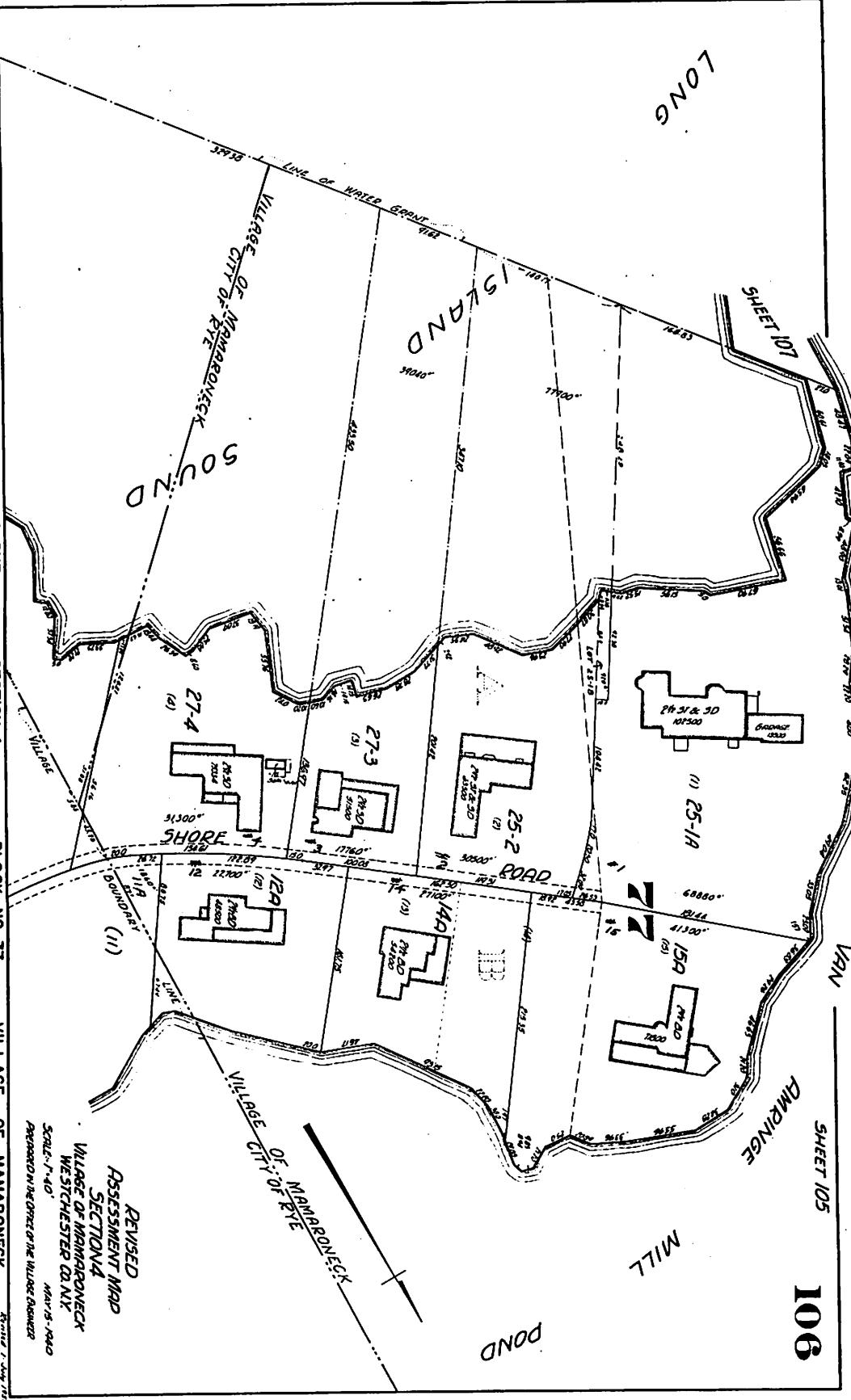
APPROVED 19 STATE TAX COMMISSION SECRETARY CASE NO. 49

ASSESSMENT MAP
 SECTION 4
 VILLAGE OF MAMARONECK
 WESTCHESTER COUNTY
 DEC 23 1965
 PREPARED IN THE OFFICE OF THE TOWN ENGINEER



APPROVED 19 STATE TAX COMMISSION SECRETARY CASE NO. 49

REVISED
ASSESSMENT MAP
SECTION 4
VILLAGE OF MAMARONECK
WESTCHESTER CO., N.Y.
SEPT 1987
SCALE 1"=40'
PREPARED IN THE OFFICE OF TITLACE ENGINEERS
105B



TAX MAP APPROVED BY THE TOWN OF RYE TAX COMMISSION SECRETARY

WESTCHESTER COUNTY, NEW YORK

SECTION 4

BLOCK NO. 77

VILLAGE OF MAMARONECK

REVISIONS

APPROVED BY THE OFFICE OF THE VILLAGE ASSessor

SCALE: 1" = 40'

MAY 15, 1940

3/14/40

106

106

SHEET 105

MILL POND

MILL

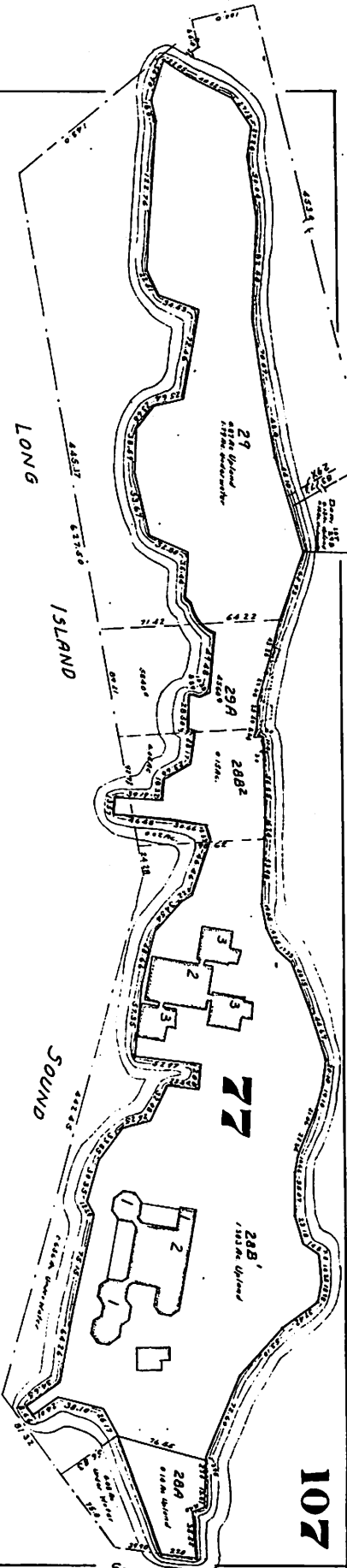
POND

VILLAGE OF MAMARONECK

REVISIONS

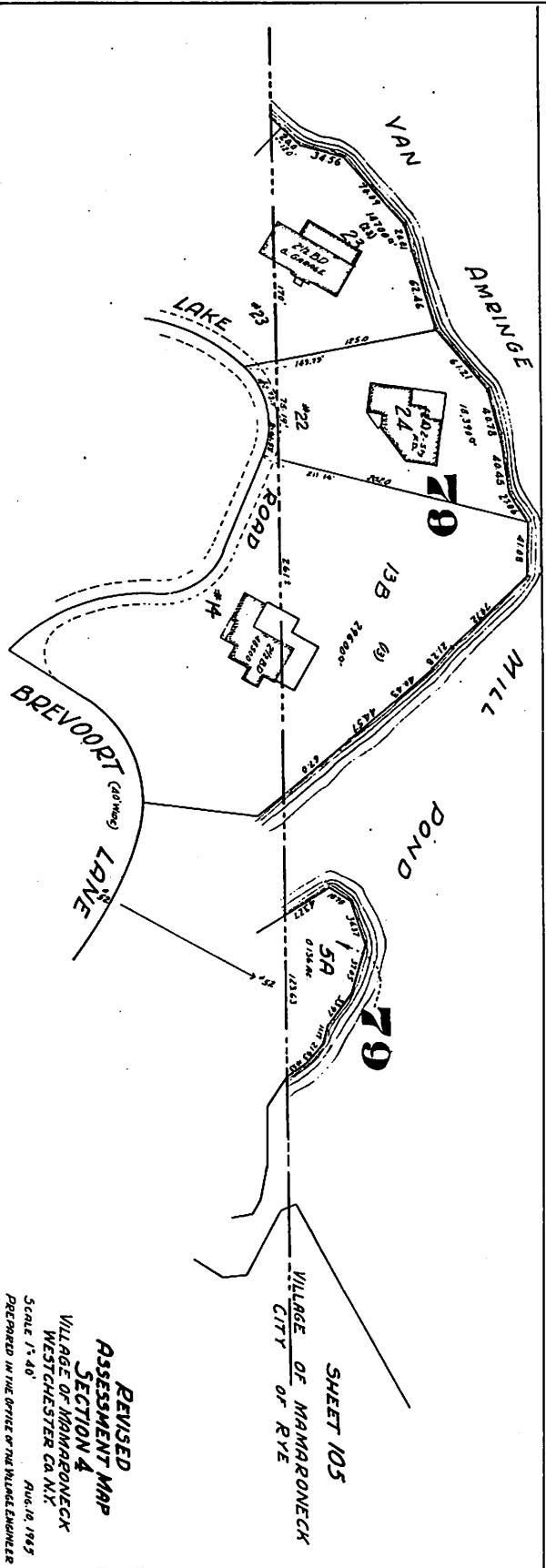
APPROVED BY THE OFFICE OF THE VILLAGE ASSessor

106



107

SHEET 106



SHEET 105

REVISED
ASSESSMENT MAP
SECTION 4
VILLAGE OF MAMARONECK
WESTCHESTER CO. N.Y.
AUG. 10, 1985
SCALE 1" = 40'
PREPARED IN THE OFFICE OF THE VILLAGE ENGINEER