

Village of Mamaroneck Tree Committee 20 August 2020 Agenda

*Approval of the Minutes

*Comments from Residents

*Correspondence

Daffodils along Boston Post Road, Kelly Susa (*attachment 1*)

Pacharapan email regarding three possibly hazardous trees at North side of 1451 Nelson St, Warren Park (*attachment 2*)

Trees were inspected by Tony just before Isais storm, all are healthy
Tiekert on VOM procedure for approval of tree removals e.g. HIP (*Attachment 3*)
Tiekert on VOM approval of utility pruning and removals (can't do, c.f. Rye ordinance) (*Attachment 3 cont.*)
Tiekert on VOM tree inventory priority (*Attachment 3 cont.*)

*Old Business

Tree Ordinance update

Ordinance referred to public hearing in September
Revised list of Recommended Species, procedures for selecting species to be prepared by BWS
(*to come*)

Tree Maintenance Issues **Please provide street numbers when reporting tree-related issues**

(Please see *Attachment 4* for correspondence with Tony)

Remaining from July meeting:

640 E. BPR on N. Barry leaning tree, hit by car, hazardous *I called and left message for property owner to contact me.* Note: What has happened since then?

The Parkway @ S. Barry Ave median – dead tree *Checked today and did not see this tree.* Note: Additional information was sent; tree has not been removed, on median facing 710 The Parkway.

Waverly Ave – three trees in ROW dead, per site plan & Planning Board, responsibility of owner or VOM? *Christy to respond. Waiting for legal to respond.* Note: Last communication from Christie Mason 22 July 2020

433 Palmer Ave tree has fungus on leaves (*Attachment 5*)

Violations

532 W BPR tree topping (see July agenda photos)
427 E BPR tree topping (Dunkin Donuts) (see July agenda photos)
427 E BPR violation notice (see July agenda photos)
717 The Parkway tree topped (see July agenda photos)

Westchester County may plant new trees on County property – Map (*Attachment 6*)

Other Questions

Pruning of larger elms

NYS Grant for inventory, planting, maintenance update, status update

List Creations

Citizen Pruners

Significant / Heritage trees
Recommended species for street trees

Fall Planting

Preliminary list (*Attachment 7*)
Highlighted street addresses to be deferred; up to 21 tall trees may be re-allocated to HIP/Rushmore Ave side.
Currently budgeted \$30,000 for new trees
Fall 2019 trees cost \$365/tree; Fall 2020 would allow 82 trees
Planting crew should provide list of final sites, plus disposition of any leftover trees

Planning Board

Draft guidelines to be presented annually
Sidewalk repairs using structural soil
Tree well planting guidelines
Distances from stop signs & corners
Ongoing maintenance of trees, particularly street trees
Recommend species suited to locations

*New Business

Citizen Pruners

Pruning techniques questions:
Elms (*Attachments 8a & b*)
Some trees have no detectible branch collars (*Attachment 9*)
Thoughts about unauthorized pruning developed while Citizen Pruning

Future protocol for hazardous tree assessments

Fall Tree Walk

Tree Committee Facebook page

Calendar Notes

Next regular meeting 7:30 p.m.

Robert Ingenito

From: Kelly Susa <ksusa@optonline.net>
Sent: Saturday, November 9, 2019 11:28 AM
To: Beverly Sherrid
Subject: Re: Trees along the Boston Post Road

Hello! Me AGAIN!

I just heard that White Plains is planting free daffodils somehow. I can't figure out what's happening there, but I found this link:

<https://realtcollective.com/registration-free-bulbs-daffodil-project-soon/> - I did a cursory Google search, I'm sure there's other info.

Is this something the Town & Village would do? That sure would look pretty all along the Post Road "dead zone" as we call it.

Anyway - I'm starting with you even though you're Ms. Tree. Perhaps you can pass this along?

Thanks and enjoy your weekend!

-K

P.S. Do you know how we got the Little Free Library at the Harbor? That is so wonderful! I had just been thinking it would be great to have that - exactly where someone put it! It made me so happy that someone else had the exact same idea. :) And then Did It!

On Sep 25, 2019, at 1:56 PM, Beverley Sherrid <bsherrid@optonline.net> wrote:

Hi Kelly,

Those are interesting suggestions for additional tree sites. I will take a look for our next round. Tom Murphy just told the Tree Committee that the Board of Trustees wants to increase our planting budget, so it's especially helpful to get new ideas right now.

Yes! Those are our watering bags! They should make a huge difference in the survival rate of newly planted trees (although the last two summers have been rainy, too), as well as their long term health.

I don't think shrubbery will work at the HS. What we need is to have the curbs built up and the soil quality improved. The Post Road is an NYS road, alas, so there may be a struggle over who will pay for it. But I am going to investigate your other locations.

Thanks for the ideas. We go over correspondence from residents every month and it's good to know people are watching and sending their thoughts.

Beverley

On Sep 23, 2019, at 11:08 AM, Kelly Susa <ksusa@optonline.net> wrote:

Beverley!

I began an answer to you but it was so long, I put it in drafts, to edit later (now deleted) & look how the time passed!! Thank you so much for your courtesy & communication.

I understand completely. How about hardy shrubbery? :) Maybe??

Yes, those HI trees will be lovely! We walk there almost daily.

If you're responsible for the various new trees (green bags on trunks)~ then, thank you! We do notice and enjoy.

Friday we walked from Orienta Avenue to Hommocks, along the Post Road. Lots of potential spots for more trees... in front of Trader Joes? More in front of Stop and Shop? Along the side of the empty banks ... ??
No doubt you are on it and have already determined those possibilities. Anyway. Really - thanks so much. What a great job you have! (Seemingly).

All best,

K

Kelly Susa
Professional Organizer
kellysusaorganizing@gmail.com
914.320.6219 (text/call)

On Sep 6, 2019, at 5:23 PM, Beverley Sherrid wrote:

Dear Kelly,

I'm afraid I have disappointing news about our hope of planting trees on the Boston Post Road near Mamaroneck HS. We will not be able to plant in the grass sections on the far side of the sidewalk, and we have determined that the Village Right of Way between the sidewalk and the street is too degraded (no curb, space frequently misused for parking, soil compacted and mixed with asphalt) for trees to survive. We will continue to look for other possibilities in this area.

I do have good news about another section of the Boston Post Road, however. We are going to plant 24 trees in the Right of Way along the Boston Post Road in front of Harbor Island Park, starting at the Orienta Avenue intersection. These trees will mature into tall shade trees — oak, sweet gum, and London Plane. I hope they are close enough to your daily activities to bring you some of the many pleasures that trees confer.

Best wishes,
Beverley

On Jan 2, 2019, at 12:41 PM, Kelly Susa
<ksusa@optonline.net> wrote:

Happy New Year!

I can't tell you how pleased I am that you're all willing to give this a try! Thank you so much for the prompt and friendly replies.

Yes, I can see that the planting area is a bit tight and the soil, poor. But I know there are trees that are more resilient. Some even like "abusive" environments :) and I can't recall which type. The Ginkgo tree survives everything, apparently, but I understand it smells like vomit, etc. when the fruit rips. Anyhoo. You're the expert, not me! Have fun choosing, and thank you! It will be so so pleasant to walk by trees there, and perhaps there will be less trash if that section looks maintained.

Also ~ it appears that once-upon-a-time, someone planted a lovely landscape along that area - you can see the roses and various pretty plants. Do you think someone could revitalize that section? I'd volunteer if there's no poison ivy!

Thanks again,

-K

On Jan 2, 2019, at 11:50 AM, Beverley Sherrid wrote:

Dear Kelly,

We will add your request to our January agenda. The Village has, in fact, planted trees in this area in the past but they didn't survive. Possibly they would do better now that we have a summer watering program for new trees. We will be limited by where there is enough space to support them, but there is definitely some land in the right of way.

Beverley Sherrid

Co-Chairman Tree Committee

Attachment 2

On Tue, Aug 18, 2020 at 9:10 PM Som Pacharapan <somo99@gmail.com> wrote:
Dear Gail,

Hope you and your family were safe and did not suffer much from the recent Storm Isaías.

Apart from the power outage for 4 days, we witnessed a few damages in the park, namely, falling big branches (up to half of two trees) destroying the tennis fences, two big branches from the tree tops, which missed our roof, and various branches and sizes all around the park.

With peak hurricane season just beginning, we are reaching out to you because of our concerns on the safety of the 3 trees at the border (the Northern side only) near the structure of our house, one leaning on our fence. With the size of these 3 trees, they could potentially cause enormous damages in cases of lightning strikes or tropical storm/hurricane kind of category.

We would really appreciate:

- 1) your attention and ground visit, so that we could properly show you the exact trees and their unsafe location, and
- 2) consideration for the 3 trees to be removed.

Thank you so very much in advance for your consideration.

Regarding the tree care and maintenance, the tree company attempted to removed trees in the morning of the major storm (Aug 4th). They could only managed to cut down one tree and had to leave before they could clear out the trunk and big logs. I believe they will return for completion. This is only an update.

Please stay well and hope to hear from you soon.

Warm regards

Som and Alex Roehrl

Attachment 3

Tickert regarding comments omitted from previous agenda

stuart tickert <tickerts@yahoo.com> Thu, Jul 9, 7:19 AM

to trees@vomny.org, TreeCom

Dear Chairs and Members of the Tree Committee,

I am writing because I received your 7/9/20 agenda. Kudos to whoever put it together, it is well ordered with easy to follow backup.

However, I would like to note couple omissions and make a couple comments prior to the meeting.

I did not see either of my below two communications to the TC. I hope those comments will be considered.

The agenda suggests that the Tree Law has been scheduled for a Public Hearing in September. In watching the BOT meeting I believe a September Public Hearing was hoped for, not scheduled. Also, I have been informed that the Village does not have a list of who has commented on the law to date.

The backup for the clear cutting of trees in HIP is woefully inadequate. There are six photos attached, four of them are of the one Locust tree that arguably had an issue that would make it a candidate for removal... The other two photos are long shots of the now removed grove of health locust trees. I have heard the suggestion that because the trees were "leaning" they needed to be removed. Just because a tree is leaning does not mean it is unhealthy or hazardous, especially where there is little to no activity in the "fall zone" of the tree.

I hope that the TC's conversation will focus on how to prevent something like this ever happening again. Please, at a minimum, advise the BOT there must be some mechanism to stop the reflexive removal of Village trees like in HIP and Guion Drive and to provide some accountability. I have made one easily implemented suggestion below.

The Rye restriction on utility pruning I believe is likely antiquated and unenforceable. The NYS Public Service Commission sets the standards for the line clearing tolerances and as long as those standards are kept to there is no avenue for action by the Village. What the utility companies CANNOT do without the Village's authorization is remove live trees but the Village never requires that.

I continue to believe that "You can't manage what you don't measure." and without a tree inventory and the Tree Management Plan is pointless and the budgeting for future tree work is a shot in the dark at best. I urge the TC to make starting this inventory your highest priority in the coming year.

Have a good meeting, I look forward to hearing the conversation.

Thanks,

Stuart Tickert

Tony Iacovelli <tiacovelli@vomny.org> Wed, Jul 15, 1:13 PM

to me, Daniel, Jerry, Gail

Beverley,

Please see reply in pink to questions below.

Tree Maintenance Issues **Please provide street numbers when reporting tree-related issues**

1533 Raleigh Road -- evergreen assessed for structural integrity (Con Ed pruned V cut) **Tree appears to be fine at this time.**

601-699 Bloomdale Ave -- severely rotted base (Gail) **Property owner removed ¾ of tree on 2-17-20, they will finish when telephone pole guide cable is removed by utility company. Tree is safe at this time.**

564 The Parkway -- Hazardous tree in median (attach 4) **Hazardous condition corrected day complaint came in.**

Note: *Tree has been marked for removal.*

520 Brook – Dead tree for removal/per Sean, already on the removal list? **Tree on list to be removed.**

702 Prospect – tree has developed crack from Con Ed pruning (attach 5) **Tree was added to the removal list do to the stress cracks, rotting roots, and no room for tree to expand due to going on large rock ledge.**

640 E. BPR on N. Barry leaning tree, hit by car, hazardous (attach 6 a, b, c) **I called and left message for property owner to contact me.**

Note: *What has happened since then?*

208 N. Barry Ave, dead tree for removal, was severely topped (attach 7) **Tree has been removed.**

512 Claflin – Dead tree (attach 8) **ON June 4 tree was put on list to be removed.**

725 The Parkway – decayed tree in median (attach 9 C 1 & 2) *Tree has a lot of decay at the base and when you sound test it with a mallet it is very hollow. There are a lot of carpenter ants eating the inside. Note: tree removed August 8*

The Parkway @ S. Barry Ave median – dead tree (attach D 1&2) *Checked today and did not see this tree.*

Note: Additional information was sent; tree has not been removed.

Dead tree in ROW by Water Treatment Plant (Gail) *We removed a tree in that area on May 27.*

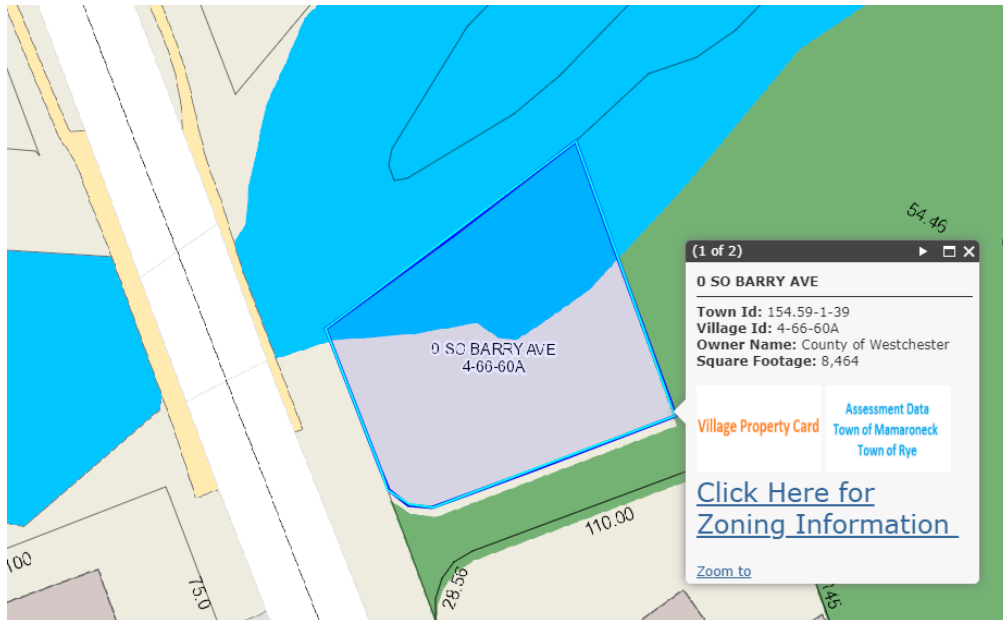
HIP tree facing bandshell needs pruning (Marlene) *Checked trees there are 5 Pin Oaks that need pruning in that area. I put them on the list.*

451 Nelson Ave (near) – leaning tree by tennis court, Warren Ave. Park; hazardous? (Gail 6/19) *Behind 1451 Nelson in the park there are 5 trees that need to be removed due all having a lot of decay on trunks and surface ground roots.*

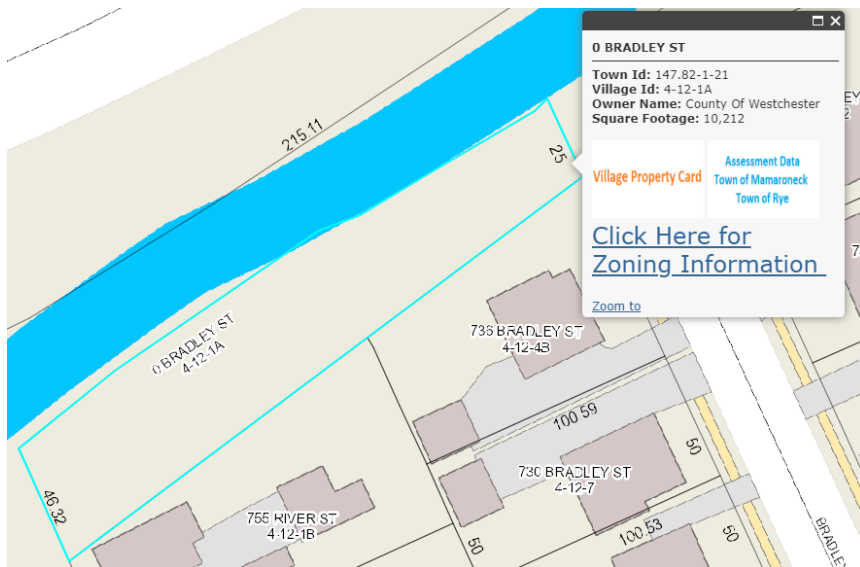
Waverly Ave – three trees in ROW dead, per site plan & Planning Board, responsibility of owner or VOM? *Christy to respond. Waiting for legal to respond.*

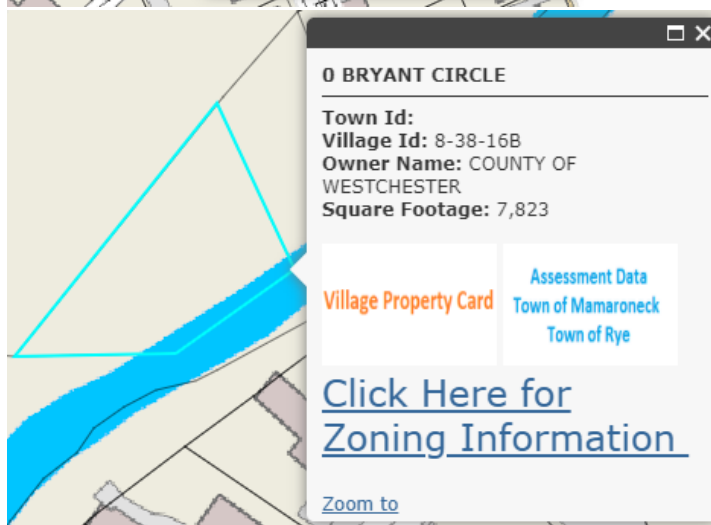
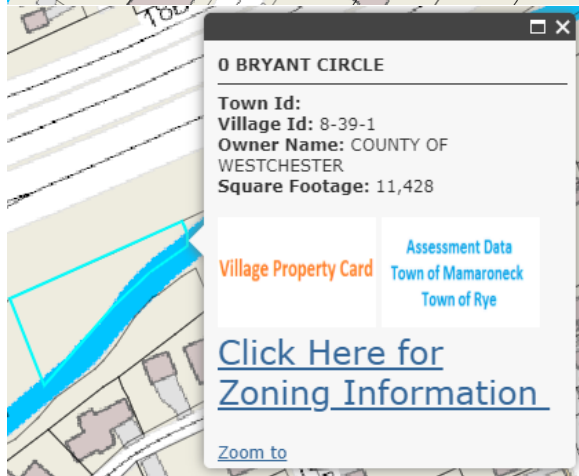
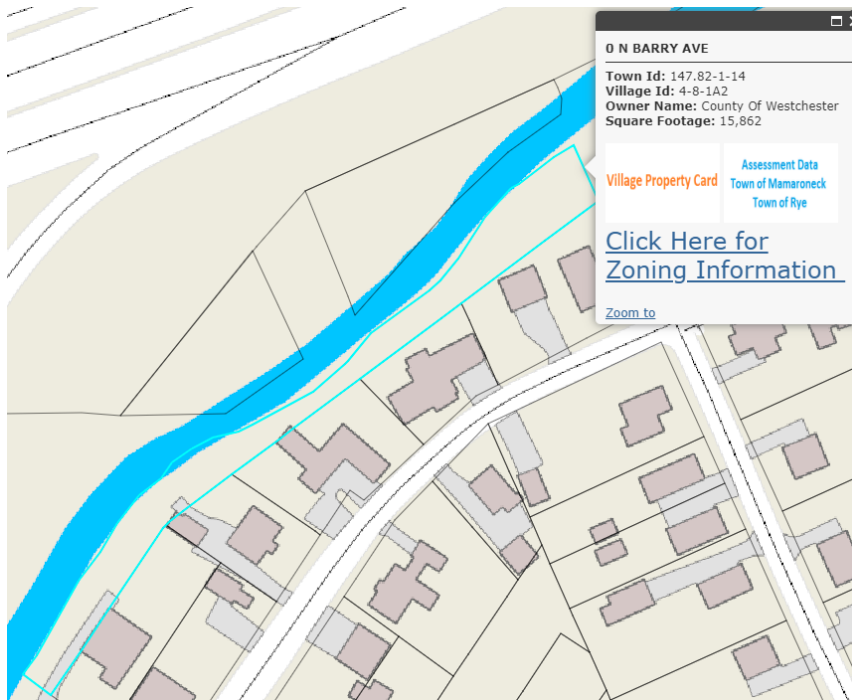


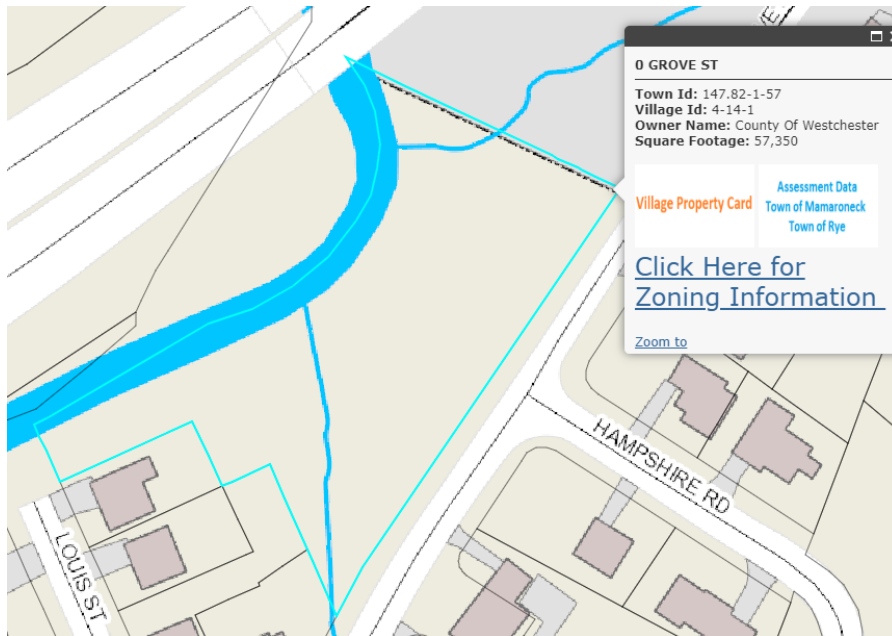
County Pump Station on South Barry Avenue



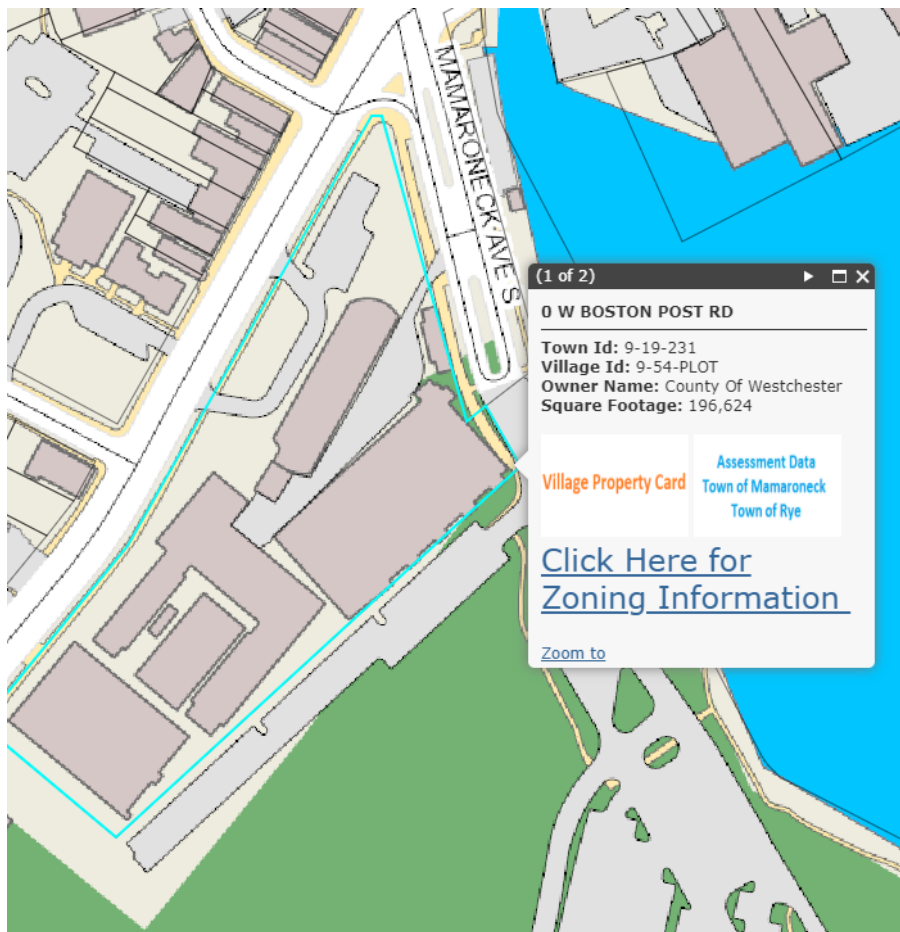
MULTIPLE PROPERTIES BETWEEN THE I-95 AND MAMARONECK RIVER



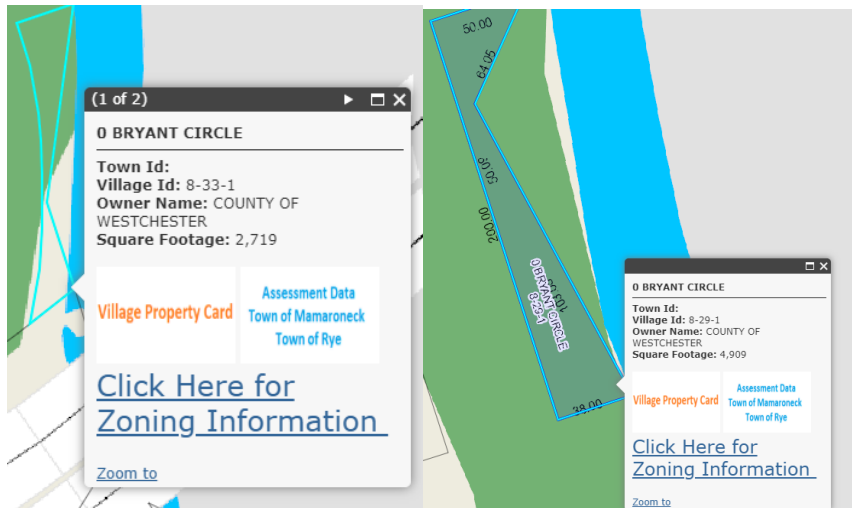




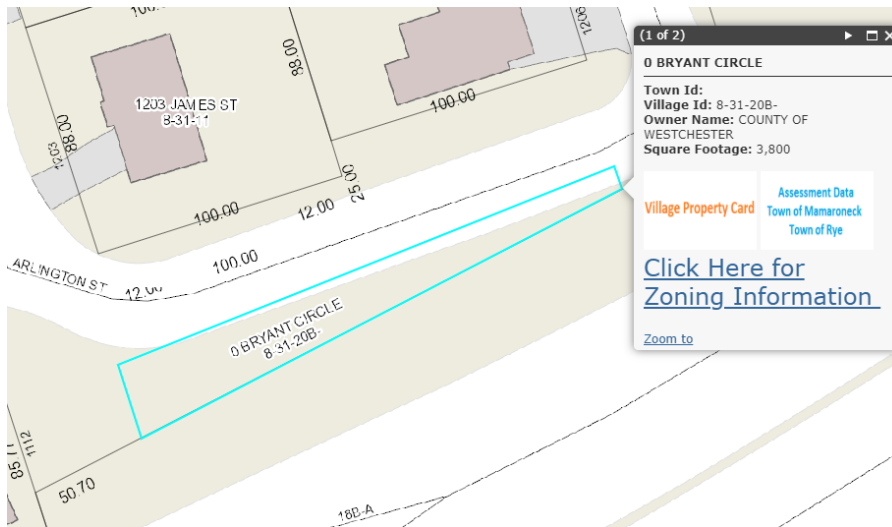
Sewage Treatment Plant



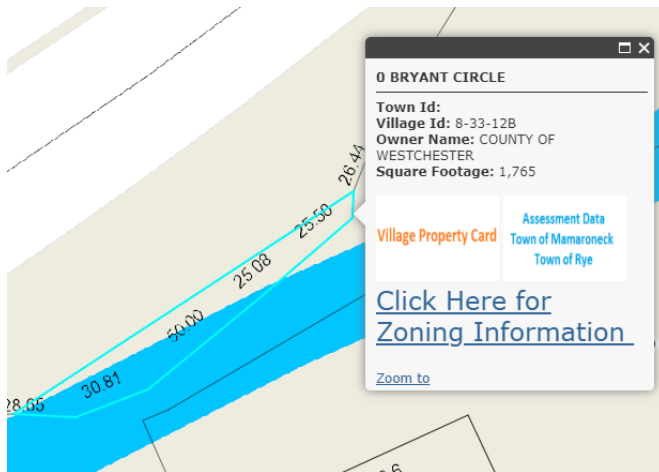
Multiple parcels within Warren Park



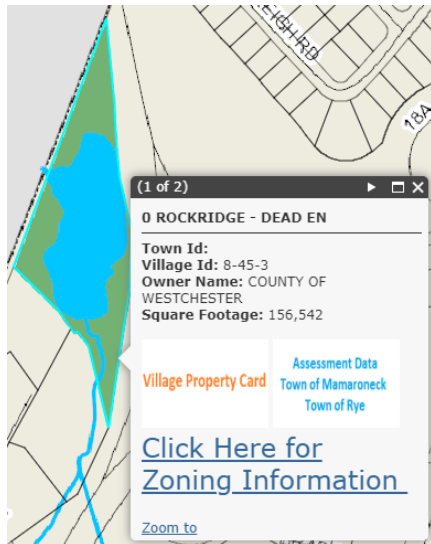
Along Arlington Street



Between Thruway and Mamaroneck River



Part of Saxon Woods



Fall 2020

19-Aug-20

<u>Number</u>	<u>Street</u>	<u>Comment</u>	<u>Small</u>	<u>Tall</u>	<u>Species</u>
<u>Palmer</u>					
820	Woodbine			1	
214	Sand			1	
176	Mt. Pleasant Ave	across from 176 Mt.Pleasant @ parking lot		1	
	Palmer Terrace			1	
	Palmer Terrace			1	
2019 TOTALS:			0	5	5

Richbell

110-128	Richbell			1	
128	Richbell			1	
200	Richbell			1	
200	Richbell			1	
200-218	Richbell			1	
200-218	Richbell			1	
220	Richbell			1	
302	Richbell			1	
342	Richbell			1	
344	Richbell			1	
36	Richbell			1	
348	Richbell			1	
2019 TOTALS:			0	12	12

Old Rye Neck South

432	Melbourne		1		
415	Hinman Place	far side of pavement		1	
419	Hinman Place	far side of pavement		1	
423	Hinman Place	far side of pavement		1	
422	Hinman Place		1		
524	Jefferson		1		
619	Second Street	<i>request to Hernane, owner reluctant</i>	1		
2019 TOTALS:			4	3	7

Shore Acres & S. Barry Ave

734	Guion Drive	across the street on green		1	
234	S. Barry @ Guion Drive	across the street on green		1	
722	Guion Drive	<i>across the street on green</i>		1	
722	Guion Drive	<i>across the street on green</i>		1	
721	Shore Acres Drive		1		
835	Shore Acres Drive	<i>across street along Guion Creek</i>		1	
835	Shore Acres Drive	<i>across street along Guion Creek</i>		1	
	The Parkway	<i>ask Marina</i>		1	
305	S. Barry	replacement		1	
620	The Parkway	median replacement	1		
735	The Parkway	replacement	1		

2019 TOTALS:

3811

Harbor Island Park/Boston Post Road

	HIP / Rushmore	replacements		5	
	HIP entrance	water side along entrance drive		1	
	HIP entrance	water side along entrance drive		1	
	HIP entrance	water side along entrance drive		1	
	HIP entrance	water side along entrance drive		1	
	HIP entrance	water side along entrance drive		1	
180-190	E Boston Post Rd	empty tree pit	1		
320	E Boston Post Rd	empty tree pit	1		
2019 TOTALS:			2	10	12

Florence Park/Sunnyside

2019 TOTALS:

000

Orienta

606	Orienta	1
606	Orienta	1
614	Orienta	1
615	Orienta	1
712	Orienta	1

712	<i>Oriena</i>		1
712	<i>Oriena</i>		1
708	<i>Forest</i>		1
727	<i>Bleecker</i>	1	
715	<i>Bleecker</i>	1	
635	<i>Bleecker on Walton</i>	1	
615	<i>Clafin</i>	1	
605	<i>Clafin</i>	1	
605	<i>Clafin</i>	1	
533	<i>Walton on Clafin</i>	1	
637	<i>Fairway @ Walton</i>	1	

900	<i>Rushmore</i>	<i>Beach Point Club</i>	1
900	<i>Rushmore</i>	<i>Beach Point Club</i>	1
900	<i>Rushmore</i>	<i>Beach Point Club</i>	1
900	<i>Rushmore</i>	<i>Beach Point Club</i>	1
900	<i>Rushmore</i>	<i>Beach Point Club</i>	1
900	<i>Rushmore</i>	<i>Beach Point Club</i>	1
954	<i>Rushmore</i>	<i>Beach Point Club</i>	1
860	<i>Rushmore</i>		1
860	<i>Rushmore</i>		1
850	<i>Rushmore</i>		1
705	<i>Rushmore</i>		1
705	<i>Rushmore</i>		1
705	<i>Rushmore</i>		1

2019 TOTALS:

5 24 29

Mamaroneck Ave

211	Mamaroneck Ave	1	crataegus "Princeton Sentry"
275	Mamaroneck Ave	1	crataegus "Princeton Sentry"

406	Mamaroneck Ave	1		crataegus "Princeton Sentry"
212	Mamaroneck Ave	1		crataegus "Princeton Sentry"
142	Mamaroneck Ave	1		crataegus "Princeton Sentry"
	Mamaroneck Ave	1		crataegus "Princeton Sentry"

2019 TOTALS:		6	0	6
Grand Total:		20	62	82

Locations marked in yellow will be defrred to next season. 21 tall trees will be reassigned to HIP, Rushmore Ave side, in addition to 5 already allocated as replacements.





